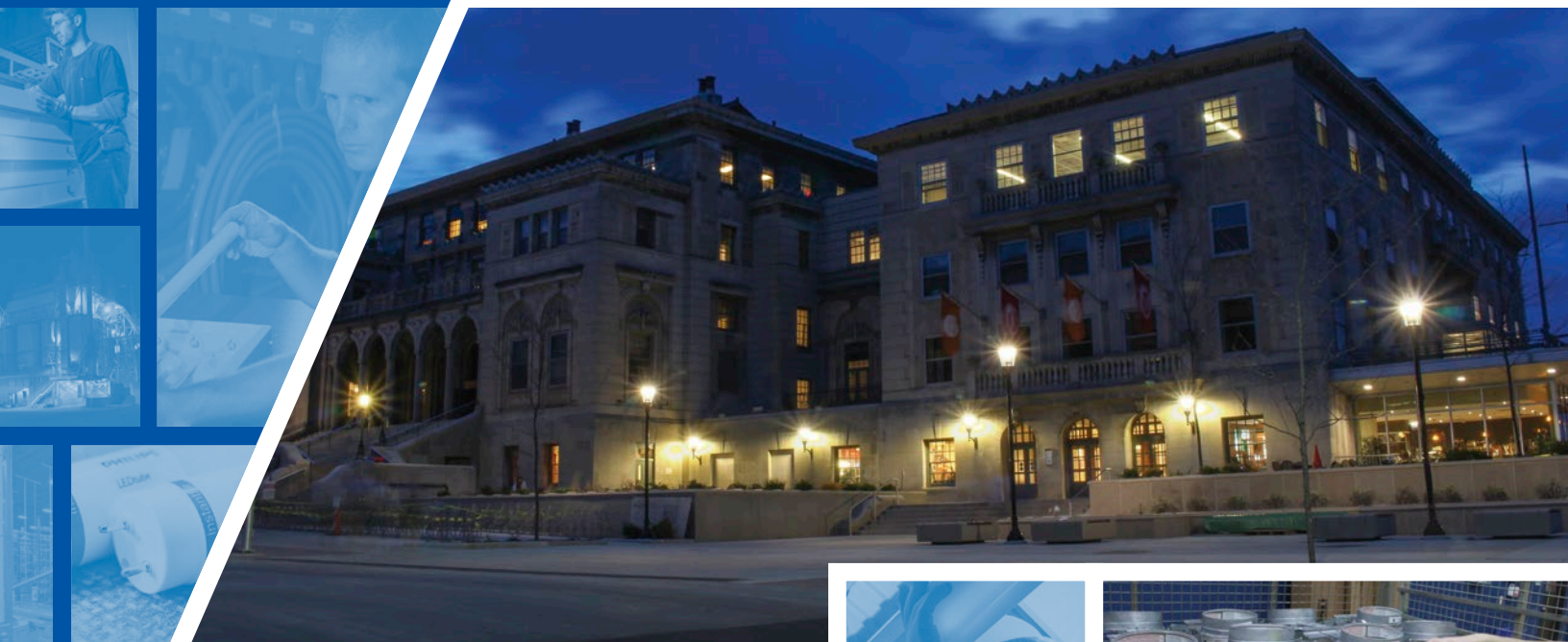


LIGHTING

stock guide



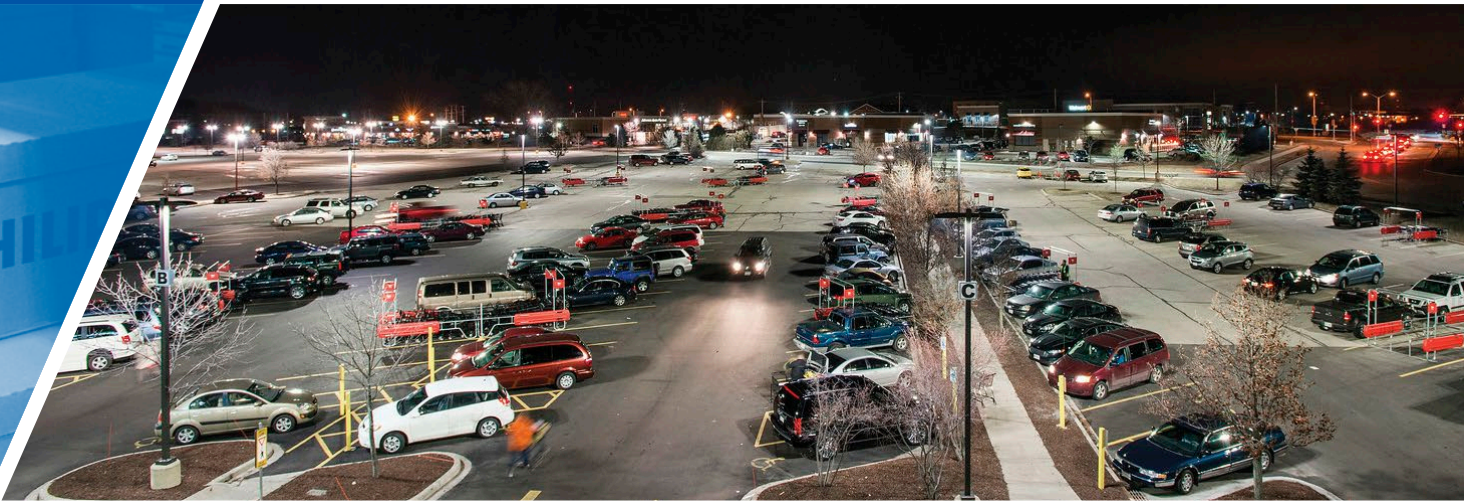
INSIDE

- Commercial/Industrial Lighting
- Indoor Recessed Lighting
- Indoor Lighting
- Lighting Controls
- Exit and Emergencies
- Outdoor Products
- Ballasts
- Lighting Services



LIGHTING

Stock Guide



Trust Werner Electric Supply for all your lighting needs.

Werner Electric Supply offers our lighting expertise for your commercial, industrial, or residential applications. Whether your project is for an indoor or outdoor setting, our Lighting Design team will help you create custom designs, guide you in taking advantage of our internal staging services, and suggest leading-edge, energy efficient lighting technology. Our goal is to save you time and money and our experience with energy efficient lighting technology will save you even more!

Werner Electric continues to partner with industry leaders to supply our vast lighting inventory. We are committed to providing you with the most comprehensive lighting solutions in the industry.

Our dedication to you ensures we continue to offer innovative lighting solutions now and into the future. Contact our lighting experts to help you determine the right solution for your next project.

Call us today:
866-4-WERNER

Contents



COMMERCIAL/INDUSTRIAL LIGHTING

Strips	4
LED Strips.....	4
Industrials	4
Strip and Industrial Retro Fits.....	5
Wrap Fixtures	5
LED Wrap Fixtures	5
Wet Location Fixtures.....	6
LED Wet Location Fixtures	6
Fluorescent Lay-In Fixtures	7
LED Lay-In Fixtures	8
Wall Brackets	8
Fluorescent High Bays - F Bays.....	9
LED High Bays.....	9

INDOOR RECESSED LIGHTING

Halo Recessed Lighting.....	10
Trims for Halo Recessed Lighting	11
Juno Recessed Lighting.....	12
Trims for Juno Recessed Lighting	13
LED Retro Trims/Modules	14

INDOOR LIGHTING

LED Tape Lights	15
Puck Lights.....	15
Step Lights	15
Undercabinet Lights	16-17

LIGHTING CONTROLS

Occupancy Sensors	18-19
Wireless Occupancy Sensors.....	19
Low Voltage Controls	19

EXITS AND EMERGENCIES

Dual Head EBU	20
Exits	20
Combo Units.....	20
Remote Units	21
EM Ballast.....	21

OUTDOOR PRODUCTS

HID Wall Packs.....	22
Wall Pack Accessories.....	22
LED Wall Packs	23
LED Flood Fixtures.....	24
Quartz Floods.....	24
Residential Style Security Lighting	24
LED Residential Style Security Lighting.....	24

OUTDOOR PRODUCTS (continued)

Security Lighting	25
LED Security Lighting.....	25
LED Canopy.....	25
Jelly Jars	25
Dock Lights	25
Flood Fixtures	25
Temporary Work Light.....	26
Perma Posts.....	26
Anchor Bolts.....	26
Fixture Mounting Hooks	26
Cords and Plugs.....	26

LED LAMPS

MR16	27
PAR16.....	27
PAR20.....	27
PAR30.....	27
PAR38.....	27
R20	28
BR30	28
BR40	28
"A" Shape	28
Corn Cobs.....	28
T8 Direct Replacement	29
T5HO Direct Replacement	29
CFL Direct Replacement	29
LED Drivers	30
Accessory	30

FLUORESCENT BALLASTS

Biax Lamps.....	31
T5 Lamps	31
T8 Lamps	31
T12 Lamps	32
Pin Based CFL Lamps.....	32
Sign Lamps	32

HID BALLASTS

Metal Halide.....	33
Pulse Start Metal Halide	33
High Pressure Sodium.....	33

LIGHTING SERVICES

Design Services	34
Project Coordination	35
Internal Staging	35

PRODUCT LINES..... 35

Commercial/Industrial Lighting



STRIPS

Description	Mfg.	Part Number
1 LAMP T8 - 2' STRIP UNIVERSAL VOLTAGE	METALUX	SNF-117-UNV-EB81-U
1 LAMP T8 - 3' STRIP UNIVERSAL VOLTAGE	METALUX	SNF-125-UNV-EB81-U
1 LAMP T8 - 4' STRIP UNIVERSAL VOLTAGE	METALUX	SSF-132-UNV-EB81-U
2 LAMP T8 - 2' STRIP UNIVERSAL VOLTAGE	METALUX	SSF-217-UNV-EB81-U
2 LAMP T8 - 4' STRIP UNIVERSAL VOLTAGE	METALUX	SSF-232-UNV-EB81-U
4 LAMP T8 - 8' TANDEM STRIP UNIVERSAL VOLTAGE	METALUX	8TSSF-232-UNV-EB81-U
4' WHITE WIREGUARD FOR "SSF" SERIES FIXTURES	METALUX	WG/SSF-4FT-B



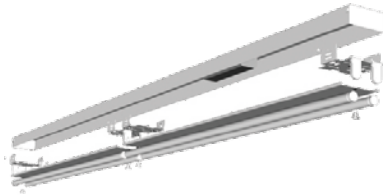
LED STRIPS

Description	Mfg.	Part Number
4,000 LUMEN - 4' LED STRIP, 4000K, 120-277V	CREE	LS4-40L-40K-10V
2,000 LUMEN - 2' LED STRIP, 4000K, 120V	METALUX	2SLSTP2040DD-120V
4,000 LUMEN - 4' LED STRIP, 4000K, 120-277V	METALUX	4SLSTP4040DD-UNV
5,000 LUMEN - 4' LED STRIP, 4000K, 120-277V	LITHONIA	ZL1N L48 5000LM FST MVOLT 40K 80CRI WH
10,000 LUMEN - 8' LED STRIP, 4000K, 120-277V	LITHONIA	TZL1N L96 10000LM FST MVOLT 40K 80CRI WH
4,000 LUMEN - 4' LED STRIP, 4000K, 120-277V	DAYBRITE	LF4EZ3840ULAG



INDUSTRIALS

Description	Mfg.	Part Number
2 LAMP T8 - 4' INDUSTRIAL UNIVERSAL VOLTAGE WITH UPLIGHT APERTURES	METALUX	IAF-232-UNV-EB81-U
2 LAMP T8 - 4' INDUSTRIAL CLOSED TOP UNIVERSAL VOLTAGE	METALUX	ICF-232-UNV-EB81-U
4 LAMP T8 - 8' TANDEM INDUSTRIAL, UNIVERSAL VOLTAGE WITH UPLIGHT APERTURES	METALUX	8TIAF-232-UNV-EB81-U
4 LAMP T8 - 8' TANDEM INDUSTRIAL, UNIVERSAL VOLTAGE	METALUX	8TICF-232-UNV-EB81-U
4' WHITE WIREGUARD FOR "IAF" AND "ICF" SERIES FIXTURES	METALUX	WG/ICF-4FT-B



STRIP AND INDUSTRIAL RETRO FITS

Description	Mfg.	Part Number
(2) 4' BALLAST CHANNEL COVERS AND BRACKETS TO RETRO 8' STRIPS TO 4' T8 LAMPING	PARAGON	8' STRIP RETRO KIT
(2) 4' SPECULAR INDUSTRIAL REFLECTORS AND BRACKETS TO RETRO 8' INDUSTRIAL TO 4' T8 LAMPING	PARAGON	8' INDUSTRIAL RETRO KIT
PRE-WIRED ADVANCE IOPA4P32LWSC (0.77 B.F.) BALLAST WITH SOCKETS AND DISCONNECTS	PARAGON	.3945482
PRE-WIRED ADVANCE IOPA2P32N (0.88 B.F.) BALLAST WITH SOCKETS AND DISCONNECTS	PARAGON	.3945484
PRE-WIRED ADVANCE IOPA4P32SC (0.88 B.F.) BALLAST WITH SOCKETS AND DISCONNECTS	PARAGON	.3945479



WRAP FIXTURES

Description	Mfg.	Part Number
2 LAMP T8 - 4' WRAP UNIVERSAL BALLAST	METALUX	WN-232A-UNV-EB81-U
4 LAMP T8 - 4' WRAP UNIVERSAL - ONE BALLAST	METALUX	WN-432A-UNV-EB81-U



LED WRAP FIXTURES

Description	Mfg.	Part Number
4,000 LUMEN - 4' LED WRAP, 4000K COLOR TEMP, 120-277V	METALUX	4SLWP4040ND-UNV
4,500 LUMEN - 4' LED WRAP, 4000K COLOR TEMP, 120-277V	LITHONIA	SBL4 LP840

Commercial/Industrial Lighting

(continued)



WET LOCATION FIXTURES

Description	Mfg.	Part Number
2 LAMP T8 - 2' VAPORTIGHT, UNIVERSAL 1-BALLAST, POLYCARBONATE HOUSING & LENS	LOVERS INTL.	ADV2-2T8-20
2 LAMP T8 - 4' VAPORTIGHT, UNIVERSAL 1-BALLAST, POLYCARBONATE HOUSING & LENS	LOVERS INTL.	ADV4-2T8-20
2 LAMP T8 - 4' VAPORTITE, UNIVERSAL 1-BALLAST	METALUX	VT3-232DR-UNV-EB81-WL-GT4-U
4 LAMP T8 - 8' TANDEM VAPORTIGHT, UNIVERSAL 1-BALLAST	COLUMBIA	XEM8-232-RA-4EU
4 LAMP T8 - 8' TANDEM VAPORTIGHT, UNIVERSAL 1-BALLAST, POLYCARBONATE HOUSING & LENS	LOVERS INTL.	ADV8-4T8-20
4 LAMP T5HO - 4' VAPORTITE HIGH BAY, SPECULAR REFLECTOR, UNIVERSAL BALLAST, FACTORY INSTALLED CORD AND 120V TWISTLOCK PLUG	NULITE	INTHB454T5HO-UNV-PSN-M4-WL-SJTW6(L515)
6 LAMP T8 - 4' VAPORTITE HIGH BAY, SPECULAR REFLECTOR, 1.18 B.F. UNIVERSAL BALLAST	NULITE	INTHB-632-UNV-MIRO4-WL
6 LAMP T5HO - 4' VAPORTITE HIGH BAY, SPECULAR REFLECTOR, UNIVERSAL BALLAST, FACTORY INSTALLED LAMPS	NULITE	INTHB-654T5HO-UNV-850LAMPS-MIRO4-6-WL-ADVANCE BALLAST
STAINLESS STEEL REPLACEMENT LATCH FOR NULITE "INTHB" SERIES	NULITE	CT2-SSL
REPLACEMENT PLASTIC LATCH FOR METALUX "VT" SERIES	METALUX	VT
REPLACEMENT 4' LENS FOR METALUX "VT2" SERIES	METALUX	VT2-4DR-U
REPLACEMENT 8' LENS FOR METALUX "VT2" SERIES	METALUX	VT2-8DR-U
REPLACEMENT 4' LENS FOR COLUMBIA "LUN4" SERIES	COLUMBIA	LUN4
REPLACEMENT 8' LENS FOR COLUMBIA "LUN8" SERIES	COLUMBIA	LUN8
REPLACEMENT 8' LENS FOR LITHONIA "TDMW" SERIES	LITHONIA	DDM96

LED WET LOCATION FIXTURES

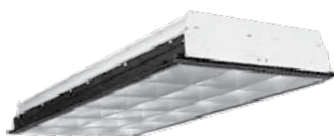
Description	Mfg.	Part Number
4,500 LUMEN - 4' LED VAPORTITE, 5000K, 120-277V	LOVERS INTL.	ADV4-LED-48W-DW
9,000 LUMEN - 8' LED VAPORTITE, 5000K, 120-277V	LOVERS INTL.	ADV8-LED-96W-DW

FLUORESCENT LAY-IN FIXTURES



FLAT LENSE TROFFER FIXTURES

Description	Mfg.	Part Number
2 U-LAMP T8 - 2X2 TROFFER 1 BALLAST UNIV	METALUX	2GR8-2U6T8A-UNV-EB81-U
2 LAMP T8 - 2X4 TROFFER UNIV	METALUX	2GR8-232A-UNV-EB81-U
3 LAMP T8 - 2X4 TROFFER, UNIVERSAL 1-BALLAST	METALUX	2GR8-332A-UNV-EB81-U
3 LAMP T8 - 2X4 TROFFER, UNIVERSAL 2-BALLAST	METALUX	2GR8-332A-UNV-EB82-U
3 LAMP T8 - 2X4 TROFFER, UNIV. BALLASTS MASTER/SATEL.	METALUX	2GR8-332A-UNV-EB82/MS-U
4 LAMP T8 - 2X4 TROFFER 1-BALLAST UNIV	METALUX	2GR8-432A-UNV-EB81-U
4 LAMP T8 - 2X4 TROFFER 2-BALLAST UNIV	METALUX	2GR8-432A-UNV-EB82-U
REPLACEMENT ACRYLIC LENS (22-3/16" X 46-1/2")	METALUX	A12-100-242G-U



PARABOLIC FIXTURES

Description	Mfg.	Part Number
2 LAMP T8 - 2X2 PARABOLIC, UNIV. 1 BALLAST	METALUX	2EP3GX-2U6T8S33I-UNV-EB81-U
3 LAMP T8 - 2X4 PARABOLIC, UNIV. 1 BALLAST	METALUX	2EP3GX-332S36I-UNV-EB81-U
3 LAMP T8 - 2X4 PARABOLIC, UNIV. 2 BALLAST	METALUX	2EP3GX-332S36I-UNV-EB82-U
3 LAMP T8 - 2X4 PARABOLIC, UNIV. BALLASTS MASTER/SATELLITE PAIR	METALUX	2EP3GX-332S36I-UNV-EB82/MS-2BC-U



DIRECT/INDIRECT TROFFERS

Description	Mfg.	Part Number
3 LAMP F17T8 DIRECT/INDIRECT FIXTURE - 2' x 2' UNIVERSAL 1-BALLAST	METALUX	2RDI-317RP-UNV-EB81-U
3 LAMP DIRECT/INDIRECT FIXTURE - 2' x 4' UNIVERSAL 1-BALLAST	METALUX	2RDI-332RP-UNV-EB81-U
3 LAMP DIRECT/INDIRECT FIXTURE - 2' x 4' UNIVERSAL 2-BALLAST	METALUX	2RDI-332RP-UNV-EB82-U

Commercial/Industrial Lighting

(continued)



LED LAY-IN FIXTURES

Description	Mfg.	Part Number
LED 2X2 LAY-IN, BASKET STYLE 3900LM 3500K, 0-10V DIMMING	JUNO	S2X2BL-3935-U-WH4
LED 2X2 LAY-IN, BASKET STYLE 3900LM 4000K, 0-10V DIMMING	JUNO	S2X2BL-3940-U-WH4
LED 2X4 LAY-IN, BASKET STYLE 3900LM 3500K, 0-10V DIMMING	JUNO	S2X4BL-3935-U-WH4
LED 2X4 LAY-IN, BASKET STYLE 3900LM 4000K, 0-10V DIMMING	JUNO	S2X4BL-3940-U-WH4
LED 2X4 LAY-IN, BASKET STYLE 5500LM 3500K, 0-10V DIMMING	JUNO	S2X4BL-5535-U-WH4
LED 2X4 LAY-IN, BASKET STYLE 5500LM 4000K, 0-10V DIMMING	JUNO	S2X4BL-5540-U-WH4
3,700 LUMEN LED 2X2 ACRYLIC LAY-IN, 4000K, 120-277V, 0-10V DIMMING	DAYBRITE	2TG38L840-2-FS-02F-UNV-DIM
3,650 LUMEN LED 2X4 ACRYLIC LAY-IN, 4000K, 120-277V, 0-10V DIMMING	DAYBRITE	2TG48L840-4-FS-02F-UNV-DIM
3,950 LUMEN LED 2X2 LAY-IN, BASKET STYLE, 4000K, 120-277V, 0-10V DIMMING	DAYBRITE	2EVG38L840-2-D-UNV-DIM
5,000 LUMEN LED 2X4 LAY-IN, BASKET STYLE, 4000K, 120-277V, 0-10V DIMMING	DAYBRITE	2EVG48L840-4-D-UNV-DIM
4,300 LUMEN LED 2X4 ACRYLIC LAY-IN, 4000K, 120-277V, 0-10V DIMMING	LITHONIA	2GTL4 LP840
4,000 LUMEN LED 2X4 FLAT PANEL, 4000K, 120-277V, 0-10V DIMMING	LEDALUX	STRFXFP-2X2-4K
4,600 LUMEN LED 2X4 FLAT PANEL, 4000K, 120-277V, 0-10V DIMMING	LEDALUX	STRFXFP-2X4-4K



WALL BRACKETS

Description	Mfg.	Part Number
2 LAMP 4 FOOT T8 WALL BRACKET, UNIVERSAL VOLTAGE	METALUX	BC-232-UNV-EB81-U

FLUORESCENT HIGH BAYS - F BAYS



HB SERIES (24" OR 15.5" WIDE)

Description	Mfg.	Part Number
T8 6 LAMP - 2' x 4' FLUOR. - 1.18 BF WITHOUT MODULAR POWER RECEPTACLE	METALUX	2HB-632-UNV-AD-IOPA3P32HLN-NUA-U
T8 6 LAMP - 2' x 4' FLUOR. - 1.18 BF WITH MODULAR POWER RECEPTACLE	METALUX	2HB-632-UNV-AD-IOPA3P32HLN-NUA-MP-U
T8 6 LAMP - 2' x 4' FLUOR. - 1.18 BF RAPID START WITH MODULAR POWER RECEPTACLE	METALUX	2HB-632-UNV-ER82/PLUS-NUA-MP-U
2 X 4 CLEAR LENSE IN A DOOR FRAME	METALUX	2HB-FRM/CL-PK

HBI SERIES (16.75" WIDE)

Description	Mfg.	Part Number
NARROW HOUSING T8 6 LAMP - 1.18 BF WITH MODULAR POWER RECEPTACLE	METALUX	RR-HBI-632-N-UNV-EB82/PLU S-MP-U
NARROW HOUSING T8 6 LAMP - 1.18 BF WITHOUT MODULAR POWER RECEPTACLE	METALUX	HBI632
"HBI" SERIES WIREGUARD IN A DOOR FRAME	METALUX	HBI-FRM/WG

ACCESSORIES

Description	Mfg.	Part Number
MODULAR MOTION SENSOR	METALUX	MMS-CMRB6
6' MODULAR POWER CORD AND 15A TWIST LOCK PLUG	METALUX	MPC6- 120, 208/240, 277
6' MODULAR POWER CORD, NO PLUG	METALUX	MC6
REPLACEMENT MODULAR PLUG	METALUX	1602VGBSMV2PK
V-HANGER TO HANG F-BAYS WITH S-HOOKS AND CHAIN	METALUX	HBAYC-CHAIN/SET-U
ADJUST. AIRCRAFT CABLE TO HANG F-BAY (2 PER FIXT.)	B-LINE	BKYT18-063-120K

LED HIGH BAYS

Description	Mfg.	Part Number
24,000 LUMEN ROUND LED HIGH BAY FIXTURE, 5000K	CREE	CXB-A-UV-M-50K-8-UL-10V
ALUMINUM 16" REFLECTOR FOR CREE CXB	CREE	CXBA16N
26,500 LUMEN ROUND INDUSTRIAL LED HIGH BAY FIXTURE, 5000K, 120-277V	DIALIGHT	HEGMC4PN-SNG
10,500 LUMEN ROUND INDUSTRIAL LED HIGH BAY FIXTURE, 5000K, 120-277V, POLYCARB LENS	DIALIGHT	HB2C4K
6,000 LUMEN INDUSTRIAL LOW BAY FIXTURE, 5000K, 120-277V POLYCARB LENS	DIALIGHT	STW9C2N
7,700 LUMEN ROUND LED HIGH BAY FIXTURE, 4000K, 120-277V	RAB	BAYLED78NW
12,000 LUMEN LED HIGH BAY FIXTURE, 5000K, 120-277V, DIFFUSING LENS	LITHONIA	IBH 12000LM SD080 MD MVOLT OZ10 50K 70CRI WH IBG12LMVOLT5K
15,000 LUMEN LED HIGH BAY FIXTURE, 5000K, 120-277V, DIFFUSING LENS	LITHONIA	IBH 15000LM SD080 MD MVOLT OZ10 50K 70CRI WH IBG15LMVOLT5K
18,000 LUMEN LED HIGH BAY FIXTURE, 5000K, 120-277V, DIFFUSING LENS	LITHONIA	IBH 18000LM SD080 MD MVOLT OZ10 50K 70CRI WH IBG18LMVOLT5K
15,800 LUMEN LED HIGH BAY FIXTURE, 4000K, 120-277V	DAYBRITE	FBX16LL40-UNV

Indoor Recessed Lighting



HALO RECESSED LIGHTING

4"

Description	Mfg.	Part Number
4" RECESSED AIR-TITE IC HOUSING REMODEL CAN	HALO	H99RTAT
4" RECESSED AIR-TITE NON-IC HOUSING CAN	HALO	H99TAT
4" RECESSED AIR - TITE IC HOUSING	HALO	H99ICAT
4" RECESSED AIR - TITE IC HOUSING W/ SOCKET BRACKET, ECONOMY GRADE	HALO	E4ICATSB

5"

5" RECESSED AIR - TITE IC HOUSING CAN	HALO	H5ICAT
5" RECESSED AIR-TITE IC HOUSING REMODEL CAN	HALO	H5RICAT
5" RECESSED AIR - TITE IC HOUSING CAN, ECONOMY GRADE	HALO	E5ICAT
5" RECESSED AIR-TITE IC HOUSING REMODEL CAN, ECONOMY GRADE	HALO	E5RICAT

6"

6" RECESSED NON-IC LED HOUSING CAN	HALO	H750T
6" RECESSED AIR - TITE IC LED HOUSING CAN	HALO	H750ICAT
6" RECESSED AIR - TITE IC HOUSING CAN	HALO	H7ICAT
6" REC. AIRE - TITE IC HOUSING CAN - NO SOCKET BRACKET	HALO	H7ICATNB
6" RECESSED NON - IC HOUSING CAN	HALO	H7T
6" RECESSED AIR-TITE IC HOUSING REMODEL CAN	HALO	H7RICAT
6" RECESSED IC HOUSING FOR 2 X 6 JOISTS, REMODEL CAN	HALO	H27RICAT
6" RECESSED IC HOUSING FOR 2 X 6 JOISTS	HALO	H27ICAT
6" RECESSED AIR - TITE IC HOUSING CAN, ECONOMY GRADE	HALO	E7ICAT
6" REC. AIRE - TITE IC HOUSING CAN - NO SOCKET BRACKET, ECONOMY GRADE	HALO	E7ICATNB
6" RECESSED AIR-TITE IC HOUSING REMODEL CAN, ECONOMY GRADE	HALO	E7RICAT

SLOPE

6" RECESSED AIR - TITE IC SLOPED 2/12 TO 6/12 CAN	HALO	H47ICAT
6" RECESSED IC SLOPED 2/12 TO 12/12 CAN	HALO	H645IC
SOCKET EXTENDER	HALO	H1999



TRIMS FOR HALO RECESSED LIGHTING

4"

Description	Mfg.	Part Number
4" WHITE COILEX BAFFLE - H99 SERIES	HALO	993W
4" WHITE EYEBALL TRIM - H99 SERIES	HALO	998P
4" SHOWER TRIM PEBBLE GLASS LENS - H99 SERIES	HALO	951PS

5"

5" WHITE METAL BAFFLE SPLAY - H5 SERIES	HALO	5001P
5" WHITE METAL STEP BAFFLE - H5 SERIES	HALO	5010W
5" SHOWER TRIM FROSTED LENS - H5 SERIES	HALO	5051PS
5" SHOWER TRIM FROSTED GLASS DOME - H5 SERIES	HALO	5054PS

6"

6" AIR-TITE SUPER TRIM WHITE BAFFLE - H7 SERIES	HALO	30WAT
6" EYEBALL TRIM - WHITE - H7 & H27 SERIES	HALO	78P
6" OPEN TRIM WITH WHITE TRIM RING - H7 & H27 SERIES	HALO	300P
6" WHITE COILEX BAFFLE - H7 & H27 SERIES	HALO	310W
6" SPECULAR TRIM WITH WHITE RING - H7 & H27 SERIES	HALO	426
6" ALBALITE GLASS LENS SHOWER TRIM - H7 SERIES	HALO	70PS
6" ALBALITE LENS SHOWER TRIM - H7 & H27 SERIES	HALO	170PS
6" SHOWER TRIM DROP LENS - H7 & H27 SERIES	HALO	172PS
6" WHITE BAFFLE, WHITE TRIM RING FOR LED MODULE	HALO	693WB

SLOPE

WHITE COILEX BAFFLE - H745 SLOPED SERIES	HALO	456W
WHITE COILEX BAFFLE - H47 SLOPED SERIES	HALO	498W

ECONOMY

ECONOMY 4" WHITE BAFFLE TRIM	HALO	4001WB
ECONOMY 4" WHITE COILEX BAFFLE	HALO	4013WB
ECONOMY 6" SHOWER TRIM	HALO	6150WH
ECONOMY 6" WHITE FULL CONE REFLECTOR	HALO	6120WH
ECONOMY 6" WHITE EYEBALL TRIM	HALO	6130WH
ECONOMY 6" WHITE BAFFLE TRIM	HALO	6100WB

Indoor Recessed Lighting

(continued)

JUNO RECESSED LIGHTING

4"

Description	Mfg.	Part Number
4" RECESSED IC HOUSING CAN WITH PUSH IN CONNECTORS	JUNO	IC1W
4" RECESSED IC HOUSING CAN	JUNO	IC1
4" RECESSED NON - IC HOUSING CAN	JUNO	TC1
4" RECESSED NON-IC REMODEL HOUSING	JUNO	TC1R
4" RECESSED LOW VOLTAGE IC HOUSING	JUNO	IC44N

5"

5" UNIVERSAL IC HOUSING	JUNO	IC20
5" UNIVERSAL IC HOUSING WITH PUSH IN CONNECTORS	JUNO	IC20W
5" IC RATED REMODEL HOUSING	JUNO	IC20R

6"

6" RECESSED IC HOUSING NEW CONSTRUCTION CAN WITH PUSH IN CONNECTORS	JUNO	IC2W
6" RECESSED NON - IC HOUSING NEW CONSTRUCTION CAN	JUNO	TC2
6" IC RATED SHALLOW HOUSING	JUNO	IC21
6" ECONOMY RECESSED IC HOUSING CAN	JUNO	IC22
6" ECONOMY RECESSED IC HOUSING REMODEL CAN	JUNO	IC22R
6" ECONOMY UNIVERSAL IC HOUSING, WITH PUSH IN CONNECTORS	JUNO	IC22W
6" ECONOMY UNIVERSAL IC HOUSING, WITH PUSH IN CONNECTORS, FLOATING SOCKET	JUNO	IC23W

SLOPE

STANDARD SLOPE RECESSED IC HOUSING SLOPED 2/12 TO 6/12 CAN	JUNO	IC926
STANDARD SLOPE RECESSED IC HOUSING SLOPED 2/12 TO 6/12 CAN WITH PUSH IN CONNECTORS	JUNO	IC926W
SUPER SLOPE RECESSED NON - IC HOUSING SLOPED 7/12 TO 12/12 CAN	JUNO	IC928
SUPER SLOPE RECESSED NON - IC HOUSING SLOPED 7/12 TO 12/12 CAN WITH PUSH IN CONNECTOR	JUNO	IC928W



TRIMS FOR JUNO RECESSED LIGHTING

4"

Description	Mfg.	Part Number
4" ULTRA TRIM BAFFLE - FULLY ENCLOSED - WHITE (WET LOCATION W/OUTDOOR LAMPS) - IC1 SERIES	JUNO	14W-WH
4" MINI EYEBALL PAR16 TRIM - IC1 SERIES	JUNO	18-WH
4" WHITE SLOT TRIM - IC44 SERIES	JUNO	445-WH

5"

5" WHITE BAFFLE WITH WHITE TRIM RING - IC20 SERIES	JUNO	205W-WH
5" WHITE GIMABL RING TRIM - IC20 SERIES	JUNO	209N-WH
5" ENCLOSED WHITE BAFFLE TRIM - IC20 SERIES	JUNO	215W-WH
5" SHOWER/CLOSET LIGHT TRIM WITH REFLECTOR (WET LOCATION APPROVED) - IC2 SERIES	JUNO	20-PW

6"

6" TRIM - WHITE WITH TAPERED BAFFLE - WHITE - IC2 & IC22 SERIES	JUNO	24W-WH
6" TAPERED BLACK BAFFLE, BRONZE TRIM - IC2 & IC22 SERIES	JUNO	24B-ABZ
6" ULTRA TRIM BAFFLE - FULLY ENCLOSED - WHITE (WET LOCATION W/OUTDOOR LAMPS) - IC2 & IC22 SERIES	JUNO	28W-WH
6" REGRESSED EYEBALL - WHITE - IC2 & IC22 SERIES	JUNO	229-WH
6" OPEN FRAME TRIM - WHITE - IC2 & IC22 SERIES	JUNO	250-WH
6" PLASTIC WHITE SHOWER TRIM WITH DROP OPAL LENS - IC2 & IC22 SERIES	JUNO	241-PW

SLOPE

STANDARD SLOPE TRIM WITH WHITE BAFFLE-DOWNLIGHT - IC926 SERIES	JUNO	614W-WH
STANDARD SLOPE TRIM WITH BLACK BAFFLE AND BRONZE TRIM RING - IC926 SERIES	JUNO	614B-ABZ
WHITE SUPER SLOPE TRIM WITH WHITE BAFFLE - IC928 SERIES	JUNO	604W-WH
SUPER SLOPE BLACK BAFFLE, BRONZE TRIM RING - IC928 SERIES	JUNO	604B-ABZ

ECONOMY

ECONOMY 5" WHITE BAFFLE TRIM	JUNO	V2015W-WH
ECONOMY 6" WHITE CONE TRIM	JUNO	V3034TW-WH
ECONOMY 6" WHITE SHOWER TRIM, DROP OPAL LENS	JUNO	V3041-PW
ECONOMY 6" WHITE CONICAL BAFFLE TRIM	JUNO	V3024W-WH

ACCESSORIES

13-1/2" to 25" REAL NAIL BAR HANGERS	JUNO	HB-1
--------------------------------------	------	------

Indoor Recessed Lighting

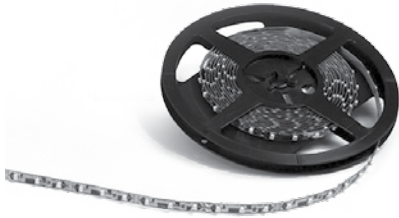
(continued)



LED RETRO TRIMS/MODULES

Description	Mfg.	Part Number
5" AND 6" RECESSED J-BOX MOUNT LED FIXTURE, 3000K, 760 LUMENS, MEDIUM BASE	HALO	SLD606830WHJB
5" AND 6" RECESSED CAN/BOX MOUNT LED FIXTURE, 3000K, 760 LUMENS, MEDIUM BASE	HALO	SLD606830WH
4" RECESSED CAN LED RETRO FIT, 2700K, 620 LUMENS, MEDIUM BASE	HALO	RL460WH927
4" RECESSED CAN LED RETRO FIT, 3000K, 620 LUMENS, MEDIUM BASE	HALO	RL460WH930
5" AND 6" RECESSED CAN LED RETRO FIT, 2700K, 600 LUMENS, MEDIUM BASE	HALO	RL560WH6927
5" AND 6" RECESSED CAN LED RETRO FIT, 3000K, 600 LUMENS, MEDIUM BASE	HALO	RL560WH6930
5" AND 6" RECESSED CAN LED RETRO FIT, 3000K, 900 LUMENS, MEDIUM BASE	HALO	RL560WH9830
5" AND 6" RECESSED CAN ADJUSTABLE GIMBAL LED RETRO FIT, 3000K, 670 LUMENS, MEDIUM BASE	HALO	RA5606930WH
5" AND 6" RECESSED CAN ECONOMY GRADE LED RETRO FIT, 3000K, 680 LUMENS, MEDIUM BASE	HALO	LT560WH6930
5" AND 6" RECESSED CAN ECONOMY GRADE LED RETRO FIT, 3500K, 700 LUMENS, MEDIUM BASE	HALO	LT560WH6935
5" AND 6" RECESSED CAN ECONOMY GRADE LED RETRO FIT, 4000K, 740 LUMENS, MEDIUM BASE	HALO	LT560WH6940
5"/6" LED MODULE FOR HALO CANS, 3000K (REQUIRES 590 OR 690 SERIES HALO TRIM)	HALO	ML5606830
5"/6" LED MODULE FOR HALO CANS, 3500K (REQUIRES 590 OR 690 SERIES HALO TRIM)	HALO	ML5606835
5"/6" LED MODULE FOR HALO CANS, 4000K, 1000 LUMENS (REQUIRES 590 OR 690 SERIES HALO TRIM)	HALO	ML5609840
4" RECESSED CAN LED RETRO FIT, 3000K, 590 LUMENS MEDIUM BASE, 90+ CRI, WHITE BAFFLE	JUNO	4RLDG2-930-6-WWH
5" RECESSED CAN LED RETRO FIT, 3000K, 620 LUMENS MEDIUM BASE, 90+ CRI, WHITE BAFFLE	JUNO	5RLD-930-6-WWH
5"/6" LED MODULE, 3000K, 820 LUMENS, WHITE TRIM	TCP	LED14DR5630K
6" RECESSED CAN LED RETRO FIT, 2700K, 630 LUMENS MEDIUM BASE, 90+ CRI, WHITE BAFFLE	JUNO	6RLDG2-927-6-WWH
6" RECESSED CAN LED RETRO FIT, 3000K, 620 LUMENS MEDIUM BASE, 90+ CRI, WHITE BAFFLE	JUNO	6RLDG2-930-6-WWH
6" 26W CFL COMMERCIAL CAN LED RETRO FIT, 2700K, 970 LUMENS, 90+ CRI, WHITE BAFFLE	JUNO	6RLC-830-9-WWH
6" 26W CFL COMMERCIAL CAN LED RETRO FIT, 3000K, 990 LUMENS, 90+ CRI, WHITE BAFFLE	JUNO	6RLC-835-9-WWH
6" RECESSED J-BOX MOUNT LED FIXTURE, 3000K, 950 LUMENS, MEDIUM BASE, 90+ CRI	GM LIGHTING	S6-3090-WH
KIT TO INSTALL GM LIGHTING "S6" FIXTURES ONTO A RECESSED CAN	GM LIGHTING	S6-RKT

Indoor Lighting



LED TAPE LIGHTS

Description	Mfg.	Part Number
16'-4" REEL LED TAPE LIGHT, 12VDC LED - 1.52W/FT. - 134 LUMENS/FT - 3500K	GM LIGHTING	LTR300-SO-WW
16'-4" REEL LED TAPE LIGHT, 12VDC LED - 1.52W/FT. - 111 LUMENS/FT - 2700K	GM LIGHTING	LTR300-SO-27
6" LED RIBBON TO POWER SUPPLY CONNECTOR	GM LIGHTING	LTW-6
12VDC ELECTRONIC POWER SUPPLY, 25W MAX. 2A, CLASS II, 120V CORD AND PLUG (CORD LENGTH: 126IN)	GM LIGHTING	LTP-2
12VDC ELECTRONIC POWER SUPPLY, 100-150W, CLASS II, 120V	GM LIGHTING	LET151
12VDC MAGNETIC DIMMABLE POWER SUPPLY, 30W MAX. 2.5A, CLASS II (DIMMABLE WITH MAGNETIC L.V. DIMMER)	GM LIGHTING	LTHM30-DIM
12VDC 5A/24VDC 2.5A MAGNETIC DIMMABLE POWER SUPPLY, 60W MAX. (DIMMABLE WITH MAGNETIC L.V. DIMMER)	GM LIGHTING	LTH-60-DIM



PUCK LIGHTS

Description	Mfg.	Part Number
12V XENON PUCK LIGHT, WHITE	WAC LIGHTING	HR-86-WT
12V, 60W NON-ENCLOSED TRANSFORMER, 1W MIN. LOAD, 120V INPUT, CLASS II RATED	WAC LIGHTING	EN-1260-R2
12V, 60W ENCLOSED TRANSFORMER, 20W MIN. LOAD, 120V INPUT	WAC LIGHTING	EN-1260-RB-AR
12V XENON PUCK LIGHT, 48" LEADS, WHITE	GM LIGHTING	XP20-W



STEP LIGHTS

Description	Mfg.	Part Number
25 WATT STEP LIGHT - W/LOUVERED TRIM 8"L X 3-1/2"D X 4-1/2"H	HALO	H2920ICT
25W (IC-RATED) AND 40W (NON IC) STEP LIGHT WITHOUT TRIM	JUNO	ICTC113
LENSED STEPLIGHT TRIM, WHITE FINISH	JUNO	104-WH

Indoor Lighting

UNDERCABINET LIGHTS



FLUORESCENT

Description	Mfg.	Part Number
34" UNDERCABINET W/ ROCKER SW, F21T5 LAMP INCLUDED, 1-1/16" DEEP	JUNO	UFL34-WH
46" UNDERCABINET W/ ROCKER SW, F28T5 LAMP INCLUDED, 1-1/16" DEEP	JUNO	UFL46-WH

LED

Description	Mfg.	Part Number
9" PRO LED UNDERCABINET, DIMMABLE, WHITE FINISH	JUNO	UPLD09-WH
14" PRO LED UNDERCABINET, DIMMABLE, WHITE FINISH	JUNO	UPLD14-WH
22" PRO LED UNDERCABINET, DIMMABLE, WHITE FINISH	JUNO	UPLD22-WH
30" PRO LED UNDERCABINET, DIMMABLE, WHITE FINISH	JUNO	UPLD30-WH
PRO UNDERCABINET SERIES DIRECT-WIRE MODULE, WHITE	JUNO	ULH-DWM-WH
12" LED UNDERCABINET LIGHT BAR, 2700K, WHITE FINISH	MAXLITE	MLSDB3327LED
70" HARDWIRED LINE CORD WITH MOLDED FIXTURE PLUG IN	MAXLITE	MLSDBJL70G
9" LOW PROFILE LED UNDERCABINET, DIMMABLE, 3000K , WHITE FINISH	HALO	HU1009D930P
18" LOW PROFILE LED UNDERCABINET, DIMMABLE, 3000K , WHITE FINISH	HALO	HU1018D930P
24" LOW PROFILE LED UNDERCABINET, DIMMABLE, 3000K , WHITE FINISH	HALO	HU1024D930P
6" DAISY CHAIN CONNECTOR, WHITE FINISH	HALO	HU102P
12" DAISY CHAIN CONNECTOR, WHITE FINISH	HALO	HU1010P
24" DAISY CHAIN CONNECTOR, WHITE FINISH	HALO	HU103P

UNDERCABINET LIGHTS



XENON

Description	Mfg.	Part Number
8" - 1 LAMP UNDERCABINET - WHITE - XENON LAMP	GM LIGHTING	X8-120-WH
8" - 1 LAMP UNDERCABINET - STAINLESS STEEL - XENON LAMP	GM LIGHTING	X8-120-SS
8" - 1 LAMP UNDERCABINET - BRONZE - XENON LAMP	GM LIGHTING	X8-120-BZ
16" - 2 LAMP UNDERCABINET - WHITE - XENON LAMP	GM LIGHTING	X16-120-WH
16" - 2 LAMP UNDERCABINET - STAINLESS STEEL - XENON LAMP	GM LIGHTING	X16-120-SS
16" - 2 LAMP UNDERCABINET - BRONZE - XENON LAMP	GM LIGHTING	X16-120-BZ
24" - 3 LAMP UNDERCABINET - WHITE - XENON LAMP	GM LIGHTING	X24-120-WH
24" - 3 LAMP UNDERCABINET - STAINLESS STEEL - XENON LAMP	GM LIGHTING	X24-120-SS
24" - 3 LAMP UNDERCABINET - BRONZE - XENON LAMP	GM LIGHTING	X24-120-BZ
32" - 4 LAMP UNDERCABINET - WHITE - XENON LAMP	GM LIGHTING	X32-120-WH
32" - 4 LAMP UNDERCABINET - STAINLESS STEEL - XENON LAMP	GM LIGHTING	X32-120-SS
32" - 4 LAMP UNDERCABINET - BRONZE - XENON LAMP	GM LIGHTING	X32-120-BZ
35W XENON REPLACEMENT LAMP	GM LIGHTING	G9-120VCL

Lighting Controls



OCCUPANCY SENSORS

WALL SWITCH SENSORS

Description	Mfg.	Part Number
PASSIVE INFRARED WALL SWITCH SENSOR, SEES OUT 30 FEET, IVORY	LEVITON	ODS10-IDI
PASSIVE INFRARED WALL SWITCH SENSOR, SEES OUT 30 FEET, WHITE	LEVITON	ODS10-IDW
PASSIVE INFRARED WALL SWITCH SENSOR, SEES OUT 30 FEET, LIGHT ALMOND	LEVITON	ODS10-IDT
PASSIVE INFRARED WALL SWITCH SENSOR, SEES OUT 30 FEET, IVORY, SELF ADAPTIVE	LEVITON	ODS15-IDI
DUAL TECHNOLOGY WALL SWITCH SENSOR W/O NEUTRAL, SEES OUT 40 FEET, IVORY	LEVITON	OSSMT-GDI
PASSIVE INFRARED WALL MOUNT SENSOR, SINGLE POLE/MULTI LOCATION, 6A 120/277V, WHITE FINISH, SEES OUT 30'	LUTRON	MS-OPS6M2-DV-WH
PASSIVE INFRARED WALL SWITCH SENSOR - 15' X 12' COVERAGE - IVORY	WATTSTOPPER	PW-100-I
PASSIVE INFRARED WALL SWITCH SENSOR - 15' X 12' COVERAGE-WHITE	WATTSTOPPER	PW-100-W
PASSIVE INFRARED WALL SWITCH SENSOR - INTEGRAL LIGHT LEVEL SENSOR - SEES OUT 35' - IVORY	WATTSTOPPER	WS-250-I
PASSIVE INFRARED WALL SWITCH SENSOR - INTEGRAL LIGHT LEVEL SENSOR - SEES OUT 35' - LIGHT ALMOND	WATTSTOPPER	WS-250-LA
PASSIVE INFRARED WALL SWITCH SENSOR -INTEGRAL LIGHT LEVEL SENSOR - SEES OUT 35' - WHITE	WATTSTOPPER	WS-250-W
0-10V PASSIVE INFRARED WALL SWITCH SENSOR - OPTIONAL NEUTRAL - SEES OUT 35' - IVORY	WATTSTOPPER	PW-311-I
0-10V PASSIVE INFRARED WALL SWITCH SENSOR - OPTIONAL NEUTRAL - SEES OUT 35' - LIGHT ALMOND	WATTSTOPPER	PW-311-LA
0-10V PASSIVE INFRARED WALL SWITCH SENSOR - OPTIONAL NEUTRAL - SEES OUT 35' - WHITE	WATTSTOPPER	PW-311-W
0-10V PASSIVE INFRARED WALL SWITCH SENSOR - OPTIONAL NEUTRAL - SEES OUT 35' - IVORY	LUTRON	MS-Z101-IV
0-10V PASSIVE INFRARED WALL SWITCH SENSOR - OPTIONAL NEUTRAL - SEES OUT 35' - LIGHT ALMOND	LUTRON	MS-Z101-LA
0-10V PASSIVE INFRARED WALL SWITCH SENSOR - OPTIONAL NEUTRAL - SEES OUT 35' - WHITE	LUTRON	MS-Z101-WH
PASSIVE INFRARED WALL SWITCH SENSOR - OPTIONAL NEUTRAL - SEES OUT 35' - DUAL RELAY - WHITE	WATTSTOPPER	PW-302-I
DUAL TECHNOLOGY WALL SWITCH SENSOR - PIR AND ULTRASONIC - 18' X 15' COVERAGE - IVORY	WATTSTOPPER	DW-100-I
DUAL TECHNOLOGY WALL SWITCH SENSOR - PIR AND ULTRASONIC - 18' X 15' COVERAGE - WHITE	WATTSTOPPER	DW-100-W

CEILING SENSORS

PASSIVE INFRARED CEILING SENSOR - 120 LINE VOLTAGE - 24' DIA.	LEVITON	ODCOS-I1W
DUAL TECHNOLOGY CEILING SENSOR - REQUIRES POWER PACK - 180° COVERAGE, 20' RADIUS	LEVITON	OSC05-MOW
DUAL TECH CEILING SENSOR - NEEDS POWER PACK - 1000' COVERAGE	LEVITON	OSC10-MOW
DUAL TECH CEILING SENSOR - NEEDS POWER PACK - 2000' COVERAGE	LEVITON	OSC20-MOW
INFRARED CEILING SENSOR - NEEDS POWER PACK - 40' DIA.	LEVITON	OSC15-IOW
PASSIVE INFRARED CEILING SENSOR - REQUIRES POWER PACK - 22' RADIUS - LIGHT LEVEL, ISOLATED RELAY	WATTSTOPPER	CI-200
PASSIVE INFRARED CEILING SENSOR - REQUIRES POWER PACK - 12' RADIUS	WATTSTOPPER	CI-205-1
ULTRASONIC CEILING SENSOR - REQUIRES POWER PACK - 24' X 48' COVERAGE	WATTSTOPPER	W-1000A
ULTRASONIC CEILING SENSOR - 600° DIRECTIONAL COVERAGE - WHITE - NEEDS POWERPACK	WATTSTOPPER	WT-605
DUAL TECHNOLOGY CEILING SENSOR, ISOLATED RELAY - NEEDS POWER PACK - 44' DIA.	WATTSTOPPER	DT-300
DUAL TECHNOLOGY CEILING SENSOR - NEEDS POWER PACK - 44' DIA.	WATTSTOPPER	DT-305

OCCUPANCY SENSORS

CEILING/WALL MOUNT SENSORS

Description	Mfg.	Part Number
PASSIVE INFRARED CEILING/WALL SENSOR - REQUIRES POWER PACK - 90° ASILE COVERAGE	WATTSTOPPER	CX-105-1
DUAL TECH WALL SENSOR - NEEDS POWER PACK - SEES OUT 55', LIGHT LEVEL, ISOLATED RELAY	WATTSTOPPER	DT-200
DUAL TECH WALL SENSOR - NEEDS POWER PACK - SEES OUT 55'	WATTSTOPPER	DT-205

HIGH BAY SENSORS

360 DEGREE INFRARED HIGH BAY SENSOR, 120/277V, (3 LENSES FOR DIFFERENT HEIGHTS)	LEVITON	OSFHU-ITW
---	---------	-----------

POWER PACKS

120/277 VOLT POWER PACK	SENSOR SWITCH	MP-20
DUAL VOLTAGE POWER PACK - 120-277V	WATTSTOPPER	BZ-50
DUAL VOLTAGE POWER PACK - 120-277V, BOTH AUTO ON & MANUAL ON SELECTION	WATTSTOPPER	BZ-150
DUAL VOLTAGE AUXILLARY RELAY PACK - 120/277/347V	WATTSTOPPER	S120/277/347E-P
DUAL VOLTAGE POWER PACK - 120/277V	LEVITON	OPP20-D1
DUAL VOLTAGE POWER PACK W/HVAC RELAY - 120/277V	LEVITON	OSP20-RDH

UL924 DEVICES

UL924 DEVICE FOR SWITCHING OF EM FIXTURES, KO MOUNTING	WATTSTOPPER	ELCU-200
--	-------------	----------



WIRELESS OCCUPANCY SENSORS

Description	Mfg.	Part Number
WIRELESS ON/OFF SWITCH, 6A LIGHTING/3A FAN RATED, 120V, WHITE FINISH	LUTRON	MRF2-6ANS-WH
PICO WIRELESS CONTROLLER, 2 BUTTON (ON/OFF), WHITE FINISH	LUTRON	PJ2-2B-GWH-L01
PICO WIRELESS CONTROLLER, 3 BUTTON (ON/OFF/PRESET WITH RAISE LOWER), WHITE FINISH	LUTRON	PJ2-3BRL-GWH-L01
PICO WIRELESS CONTROLLER FACEPLATE ADAPTER FOR WALL MOUNTING	LUTRON	PICO-WBX-ADAPT

LOW VOLTAGE CONTROLS



Description	Mfg.	Part Number
8 CIRCUIT PANEL WITH 8 RELAYS (120/277V, 20A) AND TIME CLOCK	GREENGATE	LK8
16 CIRCUIT PANEL WITH 16 RELAYS (120/277V, 20A), NO LOGIC BOARD	GREENGATE	LK16-120/277-S2-L0-M0-TO-HVB0
LOGIC BOARD (FOR USE WITH GREENGATE RELAY PANELS)	GREENGATE	LK-LB
OUTDOOR PHOTOCELL	GREENGATE	PPS-5

Exits and Emergencies



DUAL HEAD EBU

Description	Mfg.	Part Number
2 HEADED EMERGENCY	DUAL-LITE	EV2
2 HEADED EMERGENCY -INDUSTRIAL	DUAL-LITE	EZ2
2 HEADED EMERGENCY	LITHONIA	ELM2 LED
2 HEADED EMERGENCY	SURE-LITES	SEL17
2 HEADED EMERGENCY ECONOMY GRADE	SURE-LITES	APEL
2 HEADED EMERGENCY	SURE-LITES	LEM
2 HEADED EMERGENCY, 2 HEAD REMOTE CAPABLE (REQUIRES LEMR REMOTES)	SURE-LITES	LEM2
2 HEADED EMERGENCY, 4 HEAD REMOTE CAPABLE (REQUIRES LEMR REMOTES)	SURE-LITES	LEM4
HIGH PERFORMANCE 2 HEADED EMERGENCY	DUAL-LITE	LSC



EXITS

Description	Mfg.	Part Number
L.E.D. EXIT SIGN - WITH BATTERY	DUAL-LITE	LXURWE
L.E.D. EXIT SIGN - WITH BATTERY	LITHONIA	LQM S W 3 R 120/277 EL N
L.E.D. EXIT SIGN - AC ONLY, RED AND GREEN INSERTS	SURE-LITES	LPX6
L.E.D. EXIT SIGN - WITH BATTERY	SURE-LITES	LPX7
L.E.D. EXIT SIGN - WITH BATTERY - ECONOMY GRADE	SURE-LITES	APX7R
L.E.D. EXIT SIGN - WITH BATTERY - CAPABLE OF 2 REMOTES	SURE-LITES	LPXH7

COMBO UNITS

Description	Mfg.	Part Number
COMBO UNIT EXIT AND 2 HEADED EMERGENCY (LZ2 Style)	DUAL-LITE	LTURW
COMBO UNIT EXIT AND 2 HEADED EMERGENCY	DUAL-LITE	HXCURW
COMBO UNIT EXIT AND 2 HEADED EMERGENCY	LITHONIA	LHQM LED R
L.E.D. EXIT SIGN - WITH BATTERY - CAPABLE OF 2 REMOTES	LITHONIA	LHQM LED R HO
COMBO UNIT EXIT AND 2 HEADED EMERGENCY	SURE-LITES	LPX7DH
COMBO UNIT EXIT AND 2 HEADED EMERGENCY - ECONOMY GRADE	SURE-LITES	APC7R
COMBO UNIT EXIT AND 2 HEADED EMERGENCY - CAPABLE OF 2 REMOTES	DUAL-LITE	HXCURWRC12
COMBO UNIT EXIT AND 2 HEADED EMERGENCY - CAPABLE OF 2 REMOTES RED & GREEN INSERTS	SURE-LITES	LPXH7DH
COMBO UNIT EXIT AND 2 HEADED EMERGENCY - CAPABLE OF 2 REMOTES - ECONOMY GRADE (ONLY APR SERIES REMOTES)	SURE-LITES	APCH7R



REMOTE UNITS

Description	Mfg.	Part Number
2 HEADED LED REMOTE-ONLY FOR USE WITH APCH7 SERIES	SURE-LITES	APWR2
2 HEADED LED REMOTE- FOR USE WITH LHQM SERIES	LITHONIA	ELA LED T WP M12
2 HEADED LED REMOTE-ONLY FOR USE WITH LEM2 AND LEM4, INDOOR USE ONLY	SURE-LITES	LEMR2
2 HEADED LED REMOTE-ONLY FOR USE WITH LEM2 AND LEM4	SURE-LITES	LEMWR2
2 HEADED REMOTES - 5.4 WATTS EACH LAMP	SURE-LITES	6XW54DWWH
DECORATIVE 2 HEADED REMOTE UNIT - 5 WATTS EACH LAMP	DUAL-LITE	OCRDW0605
L.E.D. RETROFIT KIT - CANDELABRA-INTERMEDIATE AND DC BASES	WATT-MAN	UBW120KT-R



EM BALLAST

Description	Mfg.	Part Number
2 LAMP F32T8 EM BALLAST, 1460 LUMEN OUTPUT WITH (2) F32T8 LAMPS	BODINE	B50
REMOTE MOUNT COVER FOR B50 BALLAST MOUNTED ON THE BACK OF A FIXTURE	BODINE	RMC-60

Outdoor Products



HID WALL PACKS

Description	Mfg.	Part Number
70 WATT HPS WALLPACK - 120V W/ LAMP AND PHOTOEYE	HUBBELL	NRG-307B-PC
150 WATT HPS WALLPACK - MT - W/ LAMP ECONOMY VERSION	HUBBELL	WGH-150S
70 WATT MH WALLPACK - 120V - W/ LAMP ECONOMY VERSION	DAY-BRITE	WLT070MMT-LP-A
70 WATT MH WALLPACK - 120V - W/ LAMP ECONOMY VERSION	HUBBELL	WGH-70H
150 WATT PSMH WALLPACK - MT - W/ LAMP ECONOMY VERSION	HUBBELL	WGH-150P
250 WATT PSMH WALLPACK - MT - W/ LAMP ECONOMY VERSION	HUBBELL	WGH-250P
3200 WATT PSMH WALLPACK - MT - W/LAMP ECONOMY VERSION	HUBBELL	WGH-320P
400 WATT PSMH WALLPACK - MT - W/LAMP ECONOMY VERSION	HUBBELL	WGH-400P



WALL PACK ACCESSORIES

Description	Mfg.	Part Number
KNUCKLE FLOOD KIT FOR "XTOR1-3" SERIES LED WALL PACKS	LUMARK	XTORFLD-KNC
TRUNNION FLOOD KIT FOR "XTOR1-3" SERIES LED WALL PACKS	LUMARK	XTORFLD-TRN
KNUCKLE ADAPTOR FOR OLWX1 FIXTURES	LITHONIA	OLWX1THK
YOKE ADAPTOR FOR OLWX1 FIXTURES	LITHONIA	OLWX1YK
2" SLIPFITTER ADAPTOR FOR OLWX2 FIXTURES	LITHONIA	OLWX2TS
YOKE ADAPTOR FOR OLWX2 FIXTURES	LITHONIA	OLWX2YK

LED WALL PACKS



Description	Mfg.	Part Number
26W LED WALL PACK, 120V-277V DRIVER, J-BOX OR SURFACE MOUNT, BRONZE	RAB	WPLED26
7W LED WALL PACK, 120V DRIVER, BRONZE	LUMARK	XTOR1A
7W LED WALL PACK WITH PHOTOCELL, 120V DRIVER, BRONZE	LUMARK	XTOR1A-PC1
18W LED WALL PACK, 120-277V DRIVER, BRONZE	LUMARK	XTOR2A
18W LED WALL PACK WITH PHOTOCELL (120V), 120-277V DRIVER, BRONZE	LUMARK	XTOR2A-PC1
26W LED WALL PACK, 120-277V DRIVER, BRONZE	LUMARK	XTOR3A
38W LED WALL PACK, 120-277V DRIVER, BRONZE, FULL CUT-OFF	LUMARK	XTOR4B
38W LED WALL PACK WITH PHOTOCELL (120V), 120-277V DRIVER, BRONZE, FULL CUT-OFF	LUMARK	XTOR4B-PC1
58W LED WALL PACK, 120-277V DRIVER, BRONZE, REFRACTIVE LENS	LUMARK	XTOR6BRL
58W LED WALL PACK, 120-277V DRIVER, BRONZE, REFRACTIVE LENS, 120V PHOTOCELL	LUMARK	XTOR6BRL-PC1
81W LED WALL PACK, 120-277V DRIVER, BRONZE, FULL CUT-OFF	LUMARK	XTOR8B
81W LED WALL PACK, 120-277V DRIVER, BRONZE, REFRACTIVE LENS	LUMARK	XTOR8BRL
7,000 LUMEN LED TRADITIONAL WALL PACK, 5000K, 120-277V DRIVER, BRONZE FINISH	LITHONIA	TWH-LED-20C-50K
7,000 LUMEN LED TRADITIONAL WALL PACK, 5000K, 120-277V DRIVER, BRONZE FINISH, 277V TWISTOCK PHOTOCELL READY	LITHONIA	TWH-LED-20C-1000-50K-T3M-277-PE-DDB
7,000 LUMEN LED TRADITIONAL WALL PACK, 5000K, 120-277V DRIVER, BRONZE FINISH, 240V TWISTOCK PHOTOCELL READY	LITHONIA	TWH-LED-20C-1000-50K-T3M-240-PE-DDB
7,000 LUMEN LED TRADITIONAL WALL PACK, 5000K, 120-277V DRIVER, BRONZE FINISH, 208V TWISTOCK PHOTOCELL READY	LITHONIA	TWHLED-20C-1000-50K-T3M-208-PE-DDBX
7,000 LUMEN LED TRADITIONAL WALL PACK, 5000K, 120-277V DRIVER, BRONZE FINISH	LITHONIA	TWR2 LED 1 50K MVOLT DDB
1,300 LUMEN LED WALL PACK, 4000K, 120-277V, BRONZE FINISH	LITHONIA	OLWX1 LED 13W 40K
1,800 LUMEN LED WALL PACK, 4000K, 120-277V, BRONZE FINISH	LITHONIA	OLWX1 LED 20W 40K
4,000 LUMEN LED WALL PACK, 4000K, 120-277V, BRONZE FINISH	LITHONIA	OLWX1 LED 40W 40K
7,300 LUMEN LED WALL PACK, 4000K, 120-277V, BRONZE FINISH	LITHONIA	OLWX2 LED 90W 40K DDB
13,500 LUMEN LED WALL PACK, 4000K, 120-277V, BRONZE FINISH	LITHONIA	OLWX2 LED 150W 40K DDB
1,150 LUMEN LED WALL PACK, 4000K, 120-277V, BRONZE FINISH	STONCO	LPW7-8BZ
3,400 LUMEN LED WALL PACK, 4000K, 120-277V, BRONZE FINISH	STONCO	LPW16-78BZ
6,900 LUMEN LED WALL PACK, 4000K, 120-277V, BRONZE FINISH	STONCO	LPW32-78BZ
710 LUMEN LED WALL PACK, 4000K, 120V, BRONZE FINISH, INTEGRAL PHOTOCELL	STONCO	TLW10LED4KPCB-1

Outdoor Products (continued)

LED FLOOD FIXTURES

Description	Mfg.	Part Number
9,400 LUMEN LED FLOOD LIGHT, 4000K COLOR TEMP, 120-277V, SLIPFITTER MOUNT	LUMARK	NFFLD-A25-S
14,600 LUMEN LED FLOOD LIGHT, 4000K COLOR TEMP, 120-277V, TRUNION MOUNT	LUMARK	NFFLD-A40-T
14,600 LUMEN LED FLOOD LIGHT, 4000K COLOR TEMP, 120-277V, SLIPFITTER MOUNT	LUMARK	NFFLD-A40-S
2,000 LED FLOOD LIGHT, 4000K COLOR TEMP, 120-277V, 3/4" KNUCKLE MOUNT	LITHONIA	OFL1 LED P1 40K MVOLT THK DDBXD
4,000 LED FLOOD LIGHT, 4000K COLOR TEMP, 120-277V, 3/4" KNUCKLE MOUNT	LITHONIA	OFL1 LED P2 40K MVOLT THK DDBXD
10,000 LED FLOOD LIGHT, 4000K COLOR TEMP, 120-277V, 2" SLIPFITTER MOUNT	LITHONIA	OFL2 LED P2 40K MVOLT IS DDBXD
14,900 LED FLOOD LIGHT, 4000K COLOR TEMP, 120-277V, 2" SLIPFITTER MOUNT	LITHONIA	OFL2 LED P3 40K MVOLT IS DDBXD
3,400 LED FLOOD LIGHT, 4000K COLOR TEMP, 120-277V, 3/4" KNUCKLE MOUNT	STONCO	STKLPF2K-8



QUARTZ FLOODS

Description	Mfg.	Part Number
500 WATT QUARTZ	RAB	QF500F
500 WATT QUARTZ	HUBBELL	QL-505



RESIDENTIAL STYLE SECURITY LIGHTING

Description	Mfg.	Part Number
TWIN DIE CAST 150PAR38 (MAX.) LAMP HOLDERS WITH SENSOR, WHITE	RAB	STL110RW



LED RESIDENTIAL STYLE SECURITY LIGHTING

Description	Mfg.	Part Number
TWIN DIE CAST 1200 LUMEN FLOOD FIXTURES WITH SENSOR, 5000K, BRONZE	LITHONIA	OFLR 6LC 120 MO BZ
SINGLE 1000 LUMEN "BELL" FLOOD FIXTURE, 3000K, BRONZE (W/O COVER PLATE)	RACO	LL1000Z
SINGLE 1000 LUMEN "BELL" FLOOD FIXTURE, 3000K, GRAY (W/O COVER PLATE)	RACO	LL1000S
SINGLE 1000 LUMEN "BELL" FLOOD FIXTURE, 3000K, WHITE (W/O COVER PLATE)	RACO	LL1000W



SECURITY LIGHTING

Description	Mfg.	Part Number
150 WATT HPS DUSK TO DAWN W/ LAMP	HUBBELL	DDS-150S
100W MH DUSK TO DAWN WITH LAMP	HUBBELL	DDS-100P



LED SECURITY LIGHTING

Description	Mfg.	Part Number
5,200 LUMENS, WALL MOUNT 50W LED DUSK TO DAWN WITH ARM, 120V, GRAY FINISH (NO RERACTOR)	LUMARK	CTKRV1A
SMALL ACRYLIC REFRACTOR FOR LUMAKR CTKRV1A	LUMARK	SR-CARETAKER
3,350 LUMEN LED DUSK TO DAWN FIXTURE, 120, GRAY FINISH, GLASS REFRACTOR	STONCO	DTDLED1C5K120GY3SP



LED CANOPY

Description	Mfg.	Part Number
40W LED CANOPY FIXTURE, 2680 LUMENS, 120V-277V DRIVER, J-BOX MOUNT, BRONZE	AMERICAN	GC-C1-40-DB



JELLY JARS

Description	Mfg.	Part Number
100W INC. CEILING MOUNT JELLY JAR, NO GUARD	RAB	VC100
100W INC. CEILING MOUNT JELLY JAR, DIE-CAST GUARD	RAB	VC100DG
150W INC. SURFACE MOUNT JELLY JAR, NO GUARD, WITH J-BOX	RAB	VX100
150W INC. SURFACE MOUNT JELLY JAR, DIE-CAST GUARD, WITH J-BOX	RAB	VX100DG



DOCK LIGHTS

Description	Mfg.	Part Number
INCANDESCENT HEAD (NO ARM)	TPI	DKL-INC
40" DUAL STRUT ARM	TPI	DKL40VAARM



FLOOD FIXTURES

Description	Mfg.	Part Number
150 WATT PSMH FLOOD - MT - 1/2" KNUCKLE W/LAMP	DAYBRITE	GP2A150PMALS-6

Outdoor Products (continued)



TEMPORARY WORK LIGHT

Description	Mfg.	Part Number
150 WATT INCANDESCENT 10 SOCKET 100 FOOT STRINGLIGHT WITH 14/2 SJT CORD GUARDS INCLUDED	EPCO	16010



PERMA POSTS

Description	Mfg.	Part Number
19.5" BLACK PERMAPOST	ARLINGTON	GP19B
19.5" BRONZE PERMAPOST	ARLINGTON	GP19BR
19.5" BRONZE PERMAPOST, WITH "IN-USE" COVER	ARLINGTON	GPD19BR

ANCHOR BOLTS

Description	Mfg.	Part Number
ADJUSTABLE JIG FOR SETTING ANCHOR BOLTS, ACCEPTS 3/4" - 1-1/2" BOLT SIZES, ADJUSTS TO 8-13" BOLT CIRCLES	RND	AJ SPEEDSET
3/4" X 18" ANCHOR BOLT, HOT DIPPED GALVANIZED (SET OF 4)	MISC	ANCOR BOLT 3/4 X 18
3/4" X 25" ANCHOR BOLT, HOT DIPPED GALVANIZED (SET OF 4)	MISC	ANCOR BOLT 3/4 X 25
3/4" X 30" ANCHOR BOLT, HOT DIPPED GALVANIZED (SET OF 4)	MISC	ANCOR BOLT 3/4 X 30
1" X 36" ANCHOR BOLT, HOT DIPPED GALVANIZED (SET OF 4)	MISC	ANCOR BOLT 1 X 36

FIXTURE MOUNTING HOOKS

Description	Mfg.	Part Number
3/4" THREADED MALE HOOK WITH SAFETY SCREW	METALUX	SHK

CORDS AND PLUGS



Description	Mfg.	Part Number
120 VOLT - 16/3 SJT 83" CORD AND TWIST LOCK PLUG	CABLEMASTER	CS163-L515P-083B
277 VOLT - 16/3 SJT 83" CORD AND 15A TWIST LOCK PLUG	CABLEMASTER	CMHBC-15277TL-96-BLK
277 VOLT - 16/3 SJT 132" CORD AND 15A TWIST LOCK PLUG	CABLEMASTER	CMHBC-15277TL-132-BLK

LED Lamps



MR16

Description	Mfg.	Part Number
7W MR16 LED LAMP, 25° BEAM, 3000K COLOR TEMP	PHILIPS	461566
7W MR16 LED LAMP, 40° FLOOD, 3000K	TCP	LED712VMR1630KFL



PAR16

Description	Mfg.	Part Number
6W PAR16 LED LAMP, 25° BEAM, 3000K COLOR TEMP	PHILIPS	423509



PAR20

Description	Mfg.	Part Number
8W PAR20 LED LAMP, 25° BEAM, 3000K COLOR TEMP (ENERGY STAR RATED)	TCP	LED8P20D30KNFL



PAR30

Description	Mfg.	Part Number
12W PAR30 LED LAMP, 25° BEAM, 3000K COLOR TEMP (ENERGY STAR RATED)	TCP	LED12P30D30KNFL
12W SHORT NECK PAR30 LED LAMP, 25° BEAM, 3000K COLOR TEMP	PHILIPS	435305
12W SHORT NECK PAR30 LED LAMP, 35° BEAM, 2700K COLOR TEMP	PHILIPS	435321
12.5W LONG NECK PAR30 LED LAMP, 35° BEAM, 3000K COLOR TEMP	PHILIPS	454702



PAR38

Description	Mfg.	Part Number
11W PAR38 LED LAMP, 25° BEAM, 3000K COLOR TEMP	PHILIPS	457993
14W PAR38 LED LAMP, 25° BEAM, 3000K COLOR TEMP, DIMMABLE (ENERGY STAR RATED)	TCP	LED14P38D30KNFL
14W PAR38 LED LAMP, 25° BEAM, 4100K COLOR TEMP, DIMMABLE (ENERGY STAR RATED)	TCP	LED14P38D41KNFL
17W PAR38 LED LAMP, 25° BEAM, 2700K COLOR TEMP	PHILIPS	435388
17W PAR38 LED LAMP, 25° BEAM, 3000K COLOR TEMP	PHILIPS	435396
17W PAR38 LED LAMP, 35° BEAM, 2700K COLOR TEMP	PHILIPS	435412
17W PAR38 LED LAMP, 35° BEAM, 3000K COLOR TEMP	PHILIPS	435420

LED Lamps (continued)



R20

Description	Mfg.	Part Number
8W R20 LED LAMP, 2700K COLOR TEMP, DIMMABLE (ENERGY STAR RATED)	TCP	LED8R20D27K



BR30

Description	Mfg.	Part Number
9W BR30 LED LAMP, 2200-2700K COLOR TEMP, DIMMABLE	PHILIPS	457044
9W BR30 LED LAMP, 2700K COLOR TEMP, DIMMABLE	PHILIPS	458109
12W BR30 LED LAMP, 2700K COLOR TEMP, DIMMABLE (ENERGY STAR RATED)	TCP	LED12BR30D27K
12W BR30 LED LAMP, 4100K COLOR TEMP, DIMMABLE (ENERGY STAR RATED)	TCP	LED12BR30D41K



BR40

Description	Mfg.	Part Number
17W BR40 LED LAMP, 3000K COLOR TEMP, DIMMABLE	TCP	LED17BR40D30K

“A” SHAPE



Description	Mfg.	Part Number
6W A19 LED LAMP, 40W A19 REPLACEMENT, 2200-2700K, DIMMABLE	PHILIPS	462515
9W A19 LED LAMP, 60W A19 REPLACEMENT, 5000K, DIMMABLE	PHILIPS	455881
9.5W A19 LED LAMP, 60W A19 REPLACEMENT, 2200-2700K, DIMMABLE	PHILIPS	455824
10W A19 LED LAMP GU24 BASE, 60W A19 REPLACEMENT, 2700K, DIMMABLE	TCP	LED10A19GUDOD27K
14W A21 LED LAMP, 2200-2700K, 75W A21 REPLACEMENT, DIMMABLE	PHILIPS	459073
14.5W A19 LED LAMP, 2700K, 75W A19 REPLACEMENT, NOT DIMMABLE	PHILIPS	455683
14W A19 LED LAMP, 5000K, 75W A19 REPLACEMENT, NOT DIMMABLE	PHILIPS	455717
18W A21 LED LAMP, 100W A21 REPLACEMENT	PHILIPS	459115

CORN COBS



Description	Mfg.	Part Number
100W LED CORN COB LAMP, DIRECT WIRE (120-277V), 14000 LUMEN, 5000K COLOR TEMP, 400W HID REPLACEMENT	KEYSTONE	KT-LED100HID-EX39-850-D
54W LED CORN COB LAMP, DIRECT WIRE (120-277V), 7600 LUMEN, 5000K COLOR TEMP, 250W HID REPLACEMENT	KEYSTONE	KT-LED54HID-EX39-850-D
45W LED CORN COB LAMP, DIRECT WIRE (120-277V), 6300 LUMEN, 5000K COLOR TEMP, 175W HID REPLACEMENT	KEYSTONE	KT-LED45HID-EX39-850-D
27W LED CORN COB LAMP, DIRECT WIRE (120-277V), 3800 LUMEN, 5000K COLOR TEMP, 100W HID REPLACEMENT	KEYSTONE	KT-LED27HID-E26-850-D



T8 DIRECT REPLACEMENT

Description	Mfg.	Part Number
2 FOOT 8.5W T8 "INSTANTFIT" LED REPLACEMENT TUBE, 4000K COLOR TEMP	PHILIPS	452037
2 FOOT 8.5W T8 "INSTANTFIT" LED REPLACEMENT TUBE, 5000K COLOR TEMP	PHILIPS	452045
3 FOOT 10.5W T8 "INSTANTFIT" LED REPLACEMENT TUBE, 5000K COLOR TEMP	PHILIPS	452086
6" U-BEND 16.5W T8 "INSTANTFIT" LED REPLACEMENT TUBE, 5000K COLOR TEMP	PHILIPS	452698
4 FOOT 10W T8 "INSTANTFIT" LED REPLACEMENT TUBE, 4000K COLOR TEMP	PHILIPS	468280
4 FOOT 10W T8 "INSTANTFIT" LED REPLACEMENT TUBE, 5000K COLOR TEMP	PHILIPS	468298
4 FOOT HIGH OUTPUT 15W T8 "INSTANTFIT" LED REPLACEMENT TUBE, 3500K COLOR TEMP	PHILIPS	468314
4 FOOT HIGH OUTPUT 15W T8 "INSTANTFIT" LED REPLACEMENT TUBE, 5000K COLOR TEMP	PHILIPS	468330
4 FOOT 17W T8 "INSTANTFIT" GLASS LED REPLACEMENT TUBE, 4000K COLOR TEMP	PHILIPS	456566
4 FOOT 17W T8 "INSTANTFIT" GLASS LED REPLACEMENT TUBE, 5000K COLOR TEMP	PHILIPS	456574
4 FOOT ULTRA HIGH OUTPUT 16.5W T8 "INSTANTFIT" LED REPLACEMENT TUBE, 5000K COLOR TEMP	PHILIPS	463158
4 FOOT 18W T8 32W T8 LED REPLACEMENT TUBE, 5000K COLOR TEMP, GLASS TUBE	EIKO	LED18T8F/48/850-G6D
4 FOOT 15W T8 32W T8 LED REPLACEMENT TUBE, 5000K COLOR TEMP, SHATTERPROOF GLASS TUBE, BALLAST BYPASS	KEYSTONE	KT-LED15T8-48GC-850-D



CFL DIRECT REPLACEMENT

Description	Mfg.	Part Number
8.5W CFL "INSTANTFIT" REPLACEMENT, HORIZONTAL MOUNT, 3500K COLOR TEMP	PHILIPS	458380
8.5W CFL "INSTANTFIT" REPLACEMENT, HORIZONTAL MOUNT, 4000K COLOR TEMP	PHILIPS	458398
11W CFL "INSTANTFIT" REPLACEMENT, HORIZONTAL MOUNT, 3500K COLOR TEMP	KEYSTONE	KT-LED114P-H-835-S
10W CFL "INSTANTFIT" REPLACEMENT, VERTICAL MOUNT, 3500K COLOR TEMP	PHILIPS	458422
10W CFL "INSTANTFIT" REPLACEMENT, VERTICAL MOUNT, 4000K COLOR TEMP	PHILIPS	458430



T5HO DIRECT REPLACEMENT

Description	Mfg.	Part Number
4 FOOT 24W T5 "INSTANTFIT" LED REPLACEMENT TUBE, 4000K COLOR TEMP	PHILIPS	467142
4 FOOT 24W T5 "INSTANTFIT" LED REPLACEMENT TUBE, 5000K COLOR TEMP	PHILIPS	467159

LED Lamps (continued)



LED DRIVERS

Description	Mfg.	Part Number
PROGRAMMABLE LED - 0-10V DIMMING DRIVER, 120-277V, 250-1050mA CONSTANT CURRENT OUTPUT, 40W MAX. (LINEAR FLUORESENT CASE)	FULHAM	T1M1UNV105P-40E
PROGRAMMABLE LED - 0-10V DIMMING DRIVER, 120-277V, 350-1050mA CONSTANT CURRENT OUTPUT, 60W MAX. (LINEAR FLUORESENT CASE)	FULHAM	T1M1UNV105P-60E
PROGRAMMABLE LED - 0-10V DIMMING DRIVER, 120-277V, 250-1050mA CONSTANT CURRENT OUTPUT, 60W MAX. (CFL CASE)	FULHAM	T1M1UNV105P-60G
1-2 LAMP PHILIPS LED INSTANTFIT DRIVER, 120-277V (NOT FOR USE ON THE INSTANTFIT GLASS LAMP)	ADVANCE	ICN-2P16-TLED-N
3 LAMP PHILIPS LED INSTANTFIT DRIVER, 120-277V (NOT FOR USE ON THE INSTANTFIT GLASS LAMP)	ADVANCE	ICN-3P16-TLED-N
4 LAMP PHILIPS LED INSTANTFIT DRIVER, 120-277V (NOT FOR USE ON THE INSTANTFIT GLASS LAMP)	ADVANCE	ICN-4P16-TLED-N



ACCESSORY

Description	Mfg.	Part Number
FULHAM HANDHELD PROGRAMMING REMOTE FOR DRIVERS	FULHAM	TPSB-100

Fluorescent Ballasts



BIAX LAMPS

Description	Mfg.	Part Number
2 LAMP FT40DL UNIVERSAL VOLTAGE BALLAST	ADVANCE	ICN-2TTP40-SC
3 LAMP FT40DL UNIVERSAL VOLTAGE BALLAST	ADVANCE	ICN-3TTP40-SC

T5 LAMPS

Description	Mfg.	Part Number
2 LAMP F24T5HO UNIVERSAL VOLTAGE BALLAST	ADVANCE	ICN-2S24
2 LAMP STEP DIMMING F28T5 UNIVERSAL VOLTAGE BALLAST	ADVANCE	IOP-2S28-95-SC-SD
2 LAMP F28T5 UNIVERSAL VOLTAGE BALLAST	ADVANCE	ICN-2S28
2 LAMP F54T5HO UNIVERSAL VOLTAGE BALLAST	ADVANCE	ICN-2S54
2 LAMP F54T5HO HIGH AMBIENT TEMP. UNIVERSAL VOLTAGE BALLAST	ADVANCE	ICN-2S54-90C
2 LAMP F54T5HO HIGH AMBIENT TEMP. 347-480V BALLAST	ADVANCE	HCN-2S54-90
4 LAMP F54T5HO HIGH AMBIENT TEMP. UNIVERSAL VOLTAGE BALLAST	ADVANCE	ICN-4S54-90C-2LSG

T8 LAMPS

Description	Mfg.	Part Number
2 LAMP F32T8 UNIVERSAL VOLTAGE BALLAST, .77 B.F.	ADVANCE	IOPA-2P32-LW-N
4 LAMP F32T8 UNIVERSAL VOLTAGE BALLAST, .77 B.F.	ADVANCE	IOPA-4P32-LW-N
1 LAMP F32T8 UNIVERSAL VOLTAGE BALLAST	ADVANCE	IOPA-1P32-N
2 LAMP F32T8 UNIVERSAL VOLTAGE BALLAST	ADVANCE	IOPA-2P32-N
3 LAMP F32T8 UNIVERSAL VOLTAGE BALLAST	ADVANCE	IOPA-3P32-N
4 LAMP F32T8 UNIVERSAL VOLTAGE BALLAST	ADVANCE	IOPA-4P32-N
2 LAMP F32T8 UNIVERSAL VOLTAGE BALLAST, 1.18 B.F.	ADVANCE	IOPA-2P32-HL-N
3 LAMP F32T8 UNIVERSAL VOLTAGE BALLAST, 1.18 B.F.	ADVANCE	IOPA-3P32-HL-N
4 LAMP F32T8 UNIVERSAL VOLTAGE BALLAST, 1.18 B.F.	ADVANCE	IOP-4P32-HL-SC
2 LAMP F32T8 PROGRAMMED START UNIVERSAL VOLTAGE BALLAST	ADVANCE	IOP-2PSP32-N
3 LAMP F32T8 PROGRAMMED START UNIVERSAL VOLTAGE BALLAST	ADVANCE	IOP-3PSP32-SC
4 LAMP F32T8 PROGRAMMED START UNIVERSAL VOLTAGE BALLAST	ADVANCE	IOP-4PSP32-SC
2 LAMP F96T8 UNIVERSAL VOLTAGE BALLAST	ADVANCE	IOP-2P59-N
2 LAMP F96T8HO UNIVERSAL VOLTAGE BALLAST	ADVANCE	ICN-2S86

Fluorescent Ballasts (continued)



T12 LAMPS

Description	Mfg.	Part Number
2 LAMP F40T12 UNIVERSAL VOLTAGE ELECTRONIC BALLAST	ADVANCE	ICN-2S40-N
2 LAMP F40T12 120V ELECTRONIC BALLAST	ADVANCE	RELB-2S40-N
2 LAMP F96T12 OR F72T12 UNIVERSAL VOLTAGE ELECTRONIC BALLAST	ADVANCE	ICN-2P60-N
2 LAMP F96T12HO UNIVERSAL VOLTAGE ELECTRONIC BALLAST	ADVANCE	ICN-2S110-SC

PIN BASED CFL LAMPS

Description	Mfg.	Part Number
1 OR 2 LAMP 13W 4 PIN C.F. (QUAD OR TRIPLE TUBE) UNIVERSAL VOLTAGE BALLAST	ADVANCE	ICF-2S13-H1-LD-K
1 OR 2 LAMP 18W 4 PIN C.F. (QUAD OR TRIPLE TUBE) UNIVERSAL VOLTAGE BALLAST	ADVANCE	ICF-2S18-H1-LD-K
1 OR 2 LAMP 26W 4 PIN C.F. (QUAD OR TRIPLE TUBE) AND 1 LAMP 32W OR 42W 4 PIN C.F. (TRIPLE TUBE) UNIVERSAL VOLTAGE BALLAST	ADVANCE	ICF-2S26-H1-LD-K
2 LAMP 26, 32, OR 42W 4 PIN C.F. (TRIPLE TUBE) UNIVERSAL VOLTAGE BALLAST	ADVANCE	ICF-2S42-M2-LD-K

SIGN LAMPS

Description	Mfg.	Part Number
SIGN BALLAST (1-4) T12HO 4-32FT 120-277V	ADVANCE	ISB043214EI
SIGN BALLAST (1-4) T12HO 10-40FT 120-277V	ADVANCE	ISB104014EI
SIGN BALLAST (4-6) T12HO 8-48FT 120-277V	ADVANCE	ISB084846EI

HID Ballasts



METAL HALIDE

Description	Mfg.	Part Number
MULTI-TAP BALLAST FOR 50W MH LAMP (M110/148)	ADVANCE	71A5181001D
MULTI-TAP BALLAST FOR 70W MH LAMP (M98/143)	ADVANCE	71A5292001D
120/277V F-CAN BALLAST FOR 70W MH LAMP (M98/143)	ADVANCE	72C5282NP001
MULTI-TAP BALLAST FOR 100W MH LAMP (M90/140)	ADVANCE	71A5390001D
MULTI-TAP BALLAST FOR 150W MH LAMP (M102/142)	ADVANCE	71A5492001D
120/277V F-CAN BALLAST FOR 150/175W MH LAMP (M57/107)	ADVANCE	72C5581NP001
MULTI-TAP BALLAST FOR 150/175W MH LAMP (M57/107)	ADVANCE	71A5570001D
MULTI-TAP BALLAST FOR 250W MH LAMP (M58)	ADVANCE	71A5770001D
5-TAP BALLAST FOR 250W MH LAMP (M58)	ADVANCE	71A5750001D
MULTI-TAP BALLAST FOR 400W MH LAMP (M59)	ADVANCE	71A6071001D
5-TAP BALLAST FOR 400W MH LAMP (M59)	ADVANCE	71A6051001D
MULTI-TAP BALLAST FOR 1000W MH LAMP (M47)	ADVANCE	71A6572001
5-TAP BALLAST FOR 1000W MH LAMP (M47)	ADVANCE	71A6552001

PULSE START METAL HALIDE

Description	Mfg.	Part Number
MULTI-TAP BALLAST FOR 250W PSMH LAMP (M138/153)	ADVANCE	71A5792001D
MULTI-TAP BALLAST FOR 320W PSMH LAMP (M132/154/170)	ADVANCE	71A5892001D
MULTI-TAP BALLAST FOR 400W PSMH LAMP (M135/155/172)	ADVANCE	71A6092001D

HIGH PRESSURE SODIUM

Description	Mfg.	Part Number
HIGH PRESSURE SODIUM	ADVANCE	71A5181001D
MULTI-TAP BALLAST FOR 70W MH LAMP (M98/143)	ADVANCE	71A5292001D
120/277V F-CAN BALLAST FOR 70W MH LAMP (M98/143)	ADVANCE	72C5282NP001
MULTI-TAP BALLAST FOR 100W MH LAMP (M90/140)	ADVANCE	71A5390001D
MULTI-TAP BALLAST FOR 150W MH LAMP (M102/142)	ADVANCE	71A5492001D
120/277V F-CAN BALLAST FOR 150/175W MH LAMP (M57/107)	ADVANCE	72C5581NP001
MULTI-TAP BALLAST FOR 150/175W MH LAMP (M57/107)	ADVANCE	71A5570001D

Lighting Services



Design Services

Werner Electric Supply offers design services for all of your commercial, industrial, and residential lighting projects. Our highly trained lighting staff can assist every step of the way. We will develop a plan that implements cost-effective lighting techniques and energy efficient products. This approach will save your customers money on energy consumption.

The Process

Werner Electric's lighting specialist will visit your site to learn more about your lighting needs. Recommendations will be provided based on the information gathered from this visit. When updating a current system, our specialist will measure the existing light output and use this data as a baseline to determine the optimal light levels. For new projects, establishing the proper light levels for the specific application is an essential part of the design process. If available, AutoCAD drawings of the building and/or exterior space will be used as the basis for the new lighting layout. The new lighting drawing can then simply be added to the building's existing set of drawings.

Once light level requirements are established and drawings are provided, Werner Electric's Lighting Design team will create a lighting layout using energy efficient products that will reduce energy consumption and save your customers money! We will then present you with a project quotation based on this lighting layout.

Our staff is in constant communication with you throughout the lighting project to make sure you are satisfied with the final solution. It is part of our commitment to quality service!

Lead Time

In general, standard lead time for a design-build lighting project is 3-5 business days. This timeframe is flexible, and subject to change based upon specific project parameters and urgency. Once your project is initiated, you will be assigned a project manager who will handle your project every step of the way.

AutoCAD Capabilities: Streamlining the Process

Werner Electric's Lighting Design team can seamlessly and cost-effectively combine new lighting layouts with existing architectural drawings using AutoCAD. We can import electronic files of your building's layout into AutoCAD and use these plans as the template to create your new lighting layout. As a result you don't have to keep track of several different sets of plans and you don't have to waste time and money making extra copies. Similarly, we can place your lighting layout over the top of your new construction drawings without extra effort or expense on your part.



Project Coordination

Werner Electric Supply offers complete coordination of your lighting projects. A coordinator is assigned to your lighting project to handle the details, including:

- Confirming P.O., Bill of Materials, and Terms and Conditions
- Entering the orders with the manufacturers
- Tracking and expediting the orders
- Sending you at least weekly status/expedite reports of the products you have on order
- Preparation of shop drawings and submittals
- Preparation of O & M's if necessary
- Price and implement all change orders and reconcile billings
- Coordinating replacements for damaged and defective fixtures and lamps

We have an entire team of project coordinators. If your assigned coordinator is unavailable one of the others can step in and assist. Project documentation is accessible to our entire team, so they are *all* able to provide the information you need. We carefully track the progress of your project, and we work diligently to keep you informed of any problems or delays. When your work force is on hand, but your materials are not, you may be wasting money. So, we work to make sure you don't find yourself in that situation.

Internal Staging of Lighting Projects

To make your lighting project easier to manage, we can now store project materials in our warehouses for release to job sites on an as-needed basis.

Werner Electric takes care of:

- Replacement of damaged fixtures before they are needed on the job site
- Freight claims on damaged product
- Expediting to ensure that the product is available when needed
- Packing and grouping to meet your needs as you release product
- Delivery to your job site when you actually need the product
- Professionally receiving materials so that your electricians don't need to become material handlers.

Project staging is a value-added service for our customers, not a profit generator. So our staging costs are minimal - based on the number of shipments, size of the order and complexity of the job.

Product Lines

Ballasts

Advance Transformer

Commercial Fixtures

Cooper Lighting/Eaton
Day-Brite
Hubbell Lighting
Acuity Brands (Juno/Lithonia)
RAB

Dimmers, Photo Control, Occupancy Sensors

Hubbell Wiring Devices
Tork
Leviton
Lutron
Sensor Switch
Wattstopper

Dock Lights

TPI
Phoenix

Emergency

Dual-Lite
Sure-Lites

Explosion Proof

Crouse-Hinds/Eaton
Dialight
Appleton
General Electric
Hubbell Lighting
Killark/Hubbell

Industrial Fixtures

Cooper Lighting/Eaton
Day-Brite
General Electric
Holophane
Hubbell Lighting
Acuity Brands (Juno/Lithonia)
RAB

Lamps

Philips
Shat-R-Shield
Venture

Mini Lamps

EIKO

Sign Lamps

Interlectric

Louvers, Lenses

ALP Lighting
Louvers International

Control Systems

Douglas Lighting Controls
Cooper - Greengate
Hubbell Wiring
Intelligent Lighting Controls
Leviton
Lutron
NexLight
Wattstopper

Temporary Lighting

McGill

Locations



Northwest, Northeast, and Southwest WI Region Branches

Appleton

4800 W. Prospect Ave.
Appleton, WI 54914
Phone: 920-815-4050
Fax: 920-815-4060

Green Bay

3055 Holmgren Way
Green Bay, WI 54304
Phone: 920-337-6700
Fax: 920-337-6710

Janesville

1000 N. Parker Dr.
Janesville, WI 53545
Phone: 608-752-9496
Fax: 608-752-5810

Stevens Point

2728 Church St.
Stevens Point, WI 54481
Phone: 715-344-6385
Fax: 715-344-0199

Fond Du Lac

1301 Capital Dr.
Fond du Lac, WI 54937
Phone: 920-924-4500
Fax: 920-924-4510

Iron Mountain

1400 Breitung Ave.
Kingsford, MI 49802
Phone: 906-779-5040
Fax: 906-779-5033

Madison

4428 Pflaum Rd.
Madison, WI 53716
Phone: 608-221-0090
Fax: 608-221-4559

Wausau

7900 Highland Dr.
Wausau, WI 54401
Phone: 715-845-8808
Fax: 715-845-6545

Southeast WI Region Branches

Kenosha

4611 68th Ave.
Kenosha, WI 53144
Phone: 262-997-6225
Fax: 262-997-6226

Pewaukee

W238 N1777 Rockwood Dr.
Pewaukee, WI 53188
Phone: 262-436-5676
Fax: 262-436-0667

Sheboygan

4630 S. Taylor Dr.
Sheboygan, WI 53081
Phone: 920-694-3300
Fax: 920-694-3301

North Dakota Branches

Bismarck

1322 S. 22nd St.
Bismarck, ND 58504
Phone: 701-224-3720
Fax: 701-224-3725

Fargo

100 36th St. South, Ste. 100
Fargo, ND 58103
Phone: 701-461-6508
Fax: 701-461-6509



866-4-WERNER • www.wernerelectric.com