

FOOD & BEVERAGE

Automation/Sanitary Solutions



INSIDE

- Sensors & Cordsets
- Industrial Control and Safety Products
- On-Machine Automation
- Pneumatics
- Sanitary Enclosures
- Mechanical Solutions
- Safety PPE





FOOD & BEVERAGE

Automation/Sanitary Solutions



Werner Electric Supply offers a complete line of equipment specifically designed for Food and Beverage applications.

Safety. Efficiency. Productivity. These are just a few of the daily challenges you face in your industry. Werner Electric Supply and our vendor partners have a long history of helping customers like you overcome those challenges.

But your industry has other specific challenges unlike any other. Stringent industry standards call for the utmost concern for sanitation and cleanliness. Our partners can provide you with specifically designed equipment that meets washdown requirements: from sensors with stainless steel housings, to pneumatic components with seals designed to withstand high temperatures, to enclosures that eliminate bacteria buildup areas, and dehumidifiers to protect enclosure interiors.

You can also count on Werner Electric's expertise to help you configure the right components for your application. Give one of our product experts a call today to learn how we can help!

Contents



Sensors & Cordsets.....3-6

- Solid-State Pressure Sensors
- Solid-State Temperature Sensors
- IP69K Rated Connectors
- Inductive Proximity Sensors
- Stainless Steel Photoswitches
- Photoelectric Sensors
- Ultrasonic Sensors



Mechanical Solutions.....16

- Gearmotors
- Stainless Steel Motors
- Motorized Pulleys



Industrial Control and Safety Products..... 7

- Safety Switches
- Piezoelectric Push Buttons



Sanitary Enclosures.....17-18

- Sanitary Junction Boxes
- Thermoelectric Dehumidifier
- Sanitary Washdown Enclosures
- Sanitary HMI System



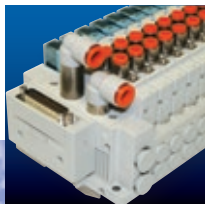
On-Machine Automation..... 8-10

- Stainless Steel Servo Motors
- Stainless Steel Actuators
- Stainless Steel Gearboxes



Safety Products.....19-20

- Disposable PPE
- Metal Detectable Hearing Protection
- Bump Caps



Pneumatic Devices ...11-15

- Filter, Regulator, Lubricator Units
- Pressure Regulators
- Vacuum Products
- Stainless Steel Fittings
- Solenoid Valves
- Stainless Steel Cylinders



Fasteners21

- Hex Cap Screws
- Socket Products
- Nuts
- Pins
- Washers
- Threaded Rod/Studs
- Concrete Anchors
- Strut & Accessories
- ASTM/ASME
- Weld Fasteners
- Screws
- Rivets
- Custom Fasteners

Sensors & Cordsets



Eric Nelson

*Product Manager – Northeast Region
Industrial Controls & Safety Products*

Eric began his career with Werner Electric Supply in September of 1995. He has an Associate of Applied Science degree in Electronics Technology from Fox Valley Technical College.

He started his tenure as an Inside Sales Representative primarily supporting the industrial market for 3 years. He then moved to Technical Support where he focused on Industrial Control and Safety components, essentially supporting all Rockwell Automation product groups. His experience helped him transition to a Product Specialist role in 2004 before moving into his current Product Manager role in 2013.

Eric's responsibility at Werner Electric is managing sales and support of the Rockwell Automation Industrial Control and Safety product groups. He enjoys visiting customers and seeing how they utilize automation products in their various applications.

Phone: 920-815-4174

E-mail: enelson@wernerelectric.com



Pat Arnoldussen

*Product Manager – West Region
Industrial Controls & Safety Products*

Pat began his career at Werner Electric Supply in June of 1990 as a Sales Engineer, calling on customers in the Fox Valley area. In 2005, Pat moved to Madison as a Product Specialist for Industrial Controls and Safety products. In his role he focuses on assisting customers with applications and technical solutions. In 2013, Pat became the Product Manager in the West Region for these product areas, acquiring additional sales and marketing responsibilities. He holds a degree in Industrial Engineering from the University of Wisconsin-Madison.

Pat enjoys helping customers find solutions to their controls applications and is amazed by the many interesting products our customers manufacture and the machines that make it happen.

Pat keeps busy with his wife Heather and their 2 children, coaching sports teams, hunting, fishing, and rooting for the Badgers.

Phone: 608-223-3660

E-mail: parnoldussen@wernerelectric.com

STANDARDS

IP69K

IP69K is an environmental rating defined by DIN 40050, Article 9.

“6” signifies external protection from dust. “9” signifies protection from close-range high pressure spray downs.

“K” applies to the high temperature of the water used.

ECOLAB and Johnson Diversey Certified

ECOLAB and Johnson Diversey are worldwide leaders in the development of cleaning and sanitizing products.

With their expertise in the food and beverage industries they are well positioned to evaluate the performance of sensors when subjected to typically acidic and alkaline cleaning and disinfecting chemicals.

Werner Electric Supply is proud to offer Allen-Bradley sensing devices for your Food and Beverage applications. Allen-Bradley sensors and cordsets meet harsh industry standards such as IP69K, ECOLAB, and Johnson Diversey.





836P Solid-State Pressure Sensors

Capable of measuring pressure of liquid or gases, the new Allen-Bradley® Solid-State 836P Pressure Sensors are available in display and non-display models. In rugged, compact housings with corrosion-resistant 316L solid-state sensor elements, they are embedded with IO-Link 1.1.

- Pressure range: -1...551 bar (-14.5 psi to 8,000 psi)
- Embedded IO-Link communication protocol helps minimize downtime/increase productivity
- Available in various process connections to fit application needs
- Rotatable housing (320°) and head (330°) provide application flexibility
- Large visual display rotates 180°
- IP67 enclosure rating

Also Available:
839E (Flow) &
840E (Level)



837T Solid-State Temperature Sensors

Allen-Bradley 837T temperature sensors are capable of measuring temperature in liquids, gases, and vapors in the range from -50 to 250 °C (-58 to 482 °F). Several different probe insertion lengths are available for display and non-display models.

- Rugged, corrosion-resistant housing
- 304 stainless steel
- Media temperature range from -20-80 °C (-4-178 °F)
- Operating temperatures from 40-85 °C (-40-185 °F)
- Four-digit 14 segment digital display
- 316T stainless steel probe
- Embedded IO-Link 1.1 communications protocol

Also Available:
839E (Flow) &
840E (Level)



IP69K Rated Connectors

IP69K is a standard that signifies protection from close range high pressure spray downs at high temperatures. The applications for this standard are in the Food and Beverage, Pharmaceutical and Petrochemical industries. Connectors support the Allen-Bradley IP69K Sensor product offering.

DC Micro (M12) Connectors

- 2, 3, 4 and 5 pin overmolded connectors on passive media
- Standard coupling nuts (epoxy coated zinc), stainless steel, and nickel plated brass
- DeviceNet thin media molded cables
- Pigtails on RightSight™ sensors

AC Micro (1/2") Connectors

- 4-Pin overmolded connectors for passive media
- Standard coupling nuts (epoxy coated zinc), stainless steel, and nickel plated brass

Mini (7/8") Connectors

- 4 and 5 pin overmolded connectors for passive media

	IP 69K
Water Temp	167°F to 185°F
Water Flow	3.69 to 4.22 gpm
Water Pressure	1160 to 1450 psi
Distance to Sample	3.93 in to 5.90 in.
Test Duration	30 secs per position (4)
Total Test Time	2 minutes



Sensors & Cordsets (continued)



871TS Food and Beverage Inductive Proximity Sensor

These sensors withstand high pressure and high temperature washdown while offering superior resistance to corrosion and damage caused by harsh cleansing agents.

- Designed specifically for food and beverage applications
- Withstands harsh cleansing and exposure to disinfecting agents
- Laser etched part number to withstand high pressure washdown
- Superior corrosion resistance



Features:

- 4-wire operation (complementary normally open and normally closed outputs)
- Gold-plated 4-pin micro quick disconnect
- 10-30V DC operation
- Standard and extended sensing ranges
- IP67, IP68, and IP69K enclosure ratings
- Stainless steel 316L barrel
- FDA certified, PPS sensing face
- Extended temp. rating , -40°C to 80°C (-40°F to 176°F)
- Short circuit, false pulse, reverse polarity, overload and transient noise protection
- cULus listed and CE marked for all applicable directives
- Laser etched part number
- ECOLAB and Johnson Diversey Certified



Photoswitch® 42CS Stainless Steel

The 42CS family of sensors is engineered to address high pressure and harsh chemical cleaning conditions. These IP69K rated sensors offer a wide range of sensing modes in a smooth or threaded 316L stainless steel housing with hardened PMMA lenses.

- High pressure resistant
- High temperature washdown resistant
- Cleaning chemicals resistant



Features:

- Innovative ferromagnetic teach for easy sensor programming
- Smooth barrel design – free of threads and seams – minimizes the accumulation of undesired particles and allows for fast and thorough cleanup
- Ideal for food and beverage industry
- Extended temperature operating range
- Robust 18 mm stainless steel 316L enclosure with laser etched markings
- Background suppression models for improved detection of shiny objects
- Two teach modes: standard and precision
- Teach lock out feature prevents unauthorized users from changing the settings
- Input to disable light source emitter
- Available in 18 mm threaded barrel models
- IP69K rated, ECOLAB and Johnson Diversey certified





RightSight™ Photoelectric Sensors

RightSight™ photoelectric sensors offer high-performance general purpose sensing in a compact, flexible package. They are designed for applications where simplified installation and maintenance are required. Suitable for general purpose environments, these sensors can also be used in areas where a rugged photoelectric sensor is required.

Features:

- Compact right angle housing
- Flexible 18mm mounting options
- 1200psi washdown rating
- IP69K
- 360° visible LED indicators
- Reverse polarity protection
- Short-circuit protected outputs
- Fast 1ms response time (DC)
- False pulse protection
- IO-Link enabled (select models)



873E RightSound™ Ultrasonic Sensors

RightSound™ 873E sensors are opposed mode ultrasonic sensors consisting of an emitter and a receiver. The sensing of clear objects, is made highly reliable with RightSound™ ultrasonic sensors. RightSound™ sensors have been designed for demanding environments, especially those of the Food and Beverage Industry.

Features:

- Continuously adjustable emitter amplitude with instability indicator
- Ideal for sensing clear objects or materials
- Highly immune to ambient sonic and electrical noise
- Highly visible 360° indicators conveniently mounted at the top of the sensor
- Designed to rugged food industry standards
- Receivers come with both NPN (sinking) and PNP (sourcing) outputs; output logic switchable via polarity of receiver power wiring; simplified product selection
- 10.8–30V DC operation with protections for short circuit, overload, reverse polarity, false pulse and transient noise



42JT VisiSight™

The 42JT VisiSight™ family offers a wide range of sensing modes and a teach push button that simplifies sensitivity adjustment and offers light vs. dark operate output selection. The unique “Auto PNP/NPN” output continuously monitors how the load is connected and automatically configures the output for proper operation and output LED to indicate correct output status.

Features:

- Class 1 “Eye Safe” red laser beam for small object and contrast detection and visible red LED models
- Unique “Auto PNP/NPN” output reduces stocking cost and simplifies selection, installation and maintenance (patent pending)
- Teach push button for sensitivity and LO/DO selection
- Superior background suppression performance
- Alignment indication in long range models
- Industry standard mounting holes plus dove-tail mounting option
- IP69K high pressure/temperature washdown rating and ECOLAB certified to withstand food industry cleaning chemicals
- Laser etched markings for durability
- IO-Link enabled (select models)



Industrial Control and Safety Products



SensaGuard™ RFID Non-Contact Safety Switches

The SensaGuard™ family of non-contact switches from Allen-Bradley® features RFID technology for coding, inductive technology for sensing and combining a large sensing range (10mm to 25mm) with optimal operations and tolerance to misalignment.

Features:

- Types: RFID standard (low) and unique (high) coded for tamper resistant operation
- 10mm to 25mm sensing range (depends on model) compensates for misalignment
- Switches can be connected in series and maintain PLe, Cat 4, SIL 3 rating (8-pin only)
- Flat pack and barrel, plastic and stainless steel, housing styles
- IP69K wash-down rated
- Standard, magnetic hold, and integrated latch versions
- LED offers diagnostics for switch status and fault finding
- M12, 5- or 8-pin quick connect pigtail speeds up installation



800K Piezoelectric Push Buttons

Rockwell Automation introduced the 800K push button line which is designed for high-pressure, caustic wash-downs in the food and beverage industry. The 800K minimizes production loss due to cleaning procedures, frequent replacement due to corrosion, bacterial growth potential from crevices and is UL certified for industrial panels.



Features:

- IP69K rating for protection against close-range high pressure, caustic wash
- Smooth, crevice-free, stainless steel surface
- No moving parts due to piezoelectric technology
- Potted circuit prevents fluid corrosion and provides additional barrier of protection
- Certifications/standards include UL508, CSA, EN IEC 60947, and ECOLAB chemical resistance
- Custom laser engraving



On-Machine Automation

Werner Electric Supply provides complete on-machine automation solutions. Our product experts have built relationships with industry-leading manufacturers of automation components, and can design the ideal solution to meet your needs.



Jeremy Lawrence
Motion Control Product Manager

Jeremy originally started with Werner Electric Supply in December of 1997 in Technical Support.

He taught many PLC 5 classes and many of the first ControlLogix schools. He became a product specialist for Werner Electric in

2005 and has been working specifically with the Rockwell Motion Control products since 2003. He has an Associate of Applied Science degree in Electromechanical Technology from North Central Technical College.

Jeremy's responsibility at Werner is managing sales and support of the Rockwell Automation Motion Control product group including servo controllers, drives, rotary motors, linear motors, and integrated linear actuators. He also supports the sales of partner motion products like servo rated gearboxes, stepper drives and motors, and linear actuators.

Jeremy's most enjoyable experience at work is helping customers solve their applications using Rockwell Automation products. Jeremy keeps busy with his wife Michelle, and their two boys by coaching multiple sports the boys participate in, musky fishing, boating, and enjoying the great outdoors.

Phone: 920-815-4198

E-mail: jlawrence@wernerelectric.com



WITTENSTEIN



LinMot®

Stainless Steel Linear Motors and Guided Actuators

LinMot® motors and guided actuators provide extremely long life, high dynamics, and high repeatability at a moderate cost. Designed for wash down applications, these motors and actuators are widely used in food & beverage, packaging, material handling and the health care industry. LinMot® linear motors and guides employ a direct electromagnetic principle. Electromagnetic force provides direct linear movement without the use of cams, gears, belts, or other mechanical devices.

Features:

- Designed for harsh or food environments
- Stainless steel housing EN1.4404 / AISI 316
- Hygienic design, completely sealed
- Protection rating IP69K



On-Machine Automation

(continued)



VP-Series Stainless-Steel Servo Motors

The VP-Series Stainless Steel (VPS) Servo Motors are designed to meet the needs of hygienic environments from food, beverage, brewing, dairy, and pharmaceutical, to health and beauty manufacturing equipment.

Features:

- Developed to match Kinetix 5500 drive ratings for optimized system sizing
- Stainless steel housing, shaft and fasteners
- Complies with NSF/ANSI Standard 169
- IP66/IP67 shaft seal and environmentally sealed connector
- Smooth passivated 300-series stainless-steel cylindrical exterior



VP-Series Food Grade Servo Motors

The VP-Series Food Grade (VPF) Motor incorporates food-grade paint and shaft seal, along with noncorrosive fasteners and stainless steel shaft for food environments.

Features:

- Configurable winding options, brakes, and encoder feedback
- Food-grade epoxy coating
- IP66/IP67 with shaft seal (standard) and use of environmentally sealed cable connector



EDrive Eliminator ST Actuators

Features:

- 300 series stainless exterior
- IP66 wash down protection
- Thrust from 2,000 to 25,000 pounds
- Piston with rugged anti-rotation feature
- Rounded and/or peaked drive covers, rounded front or rear caps
- Machined to suit any motor





Axenia Servo Actuators

Designed for demanding applications and manufactured from highly resistant stainless steel, Axenia is a compact servo actuator which connects the motor to the gearhead with absolute precision and dynamics. Axenia has the ability to permanently withstand a wide range of aggressive fluids such as cleaners and disinfectants.

Features:

- Axenia AXV 115, 080 and 060 series
- Hygienic, cavity-free design
- Hygienic connection between motor and gearhead
- External O-rings meet EDEDG and 3A standards
- IP69K Protection

Washdown Gearboxes available from Wittenstein

Wittenstein offers stainless steel and nickel plated gearheads with medium corrosion resistance. The new stainless steel LP Generation 3 product family, as well as upgraded inline and right angle GCR product portfolio, effectively protects gearheads from corrosion while ensuring reliable performance. All gearheads are supplied with food grade lubrication and a 300 series of stainless steel output configuration to meet your requirements.

Wittenstein Washdown Selection Guide

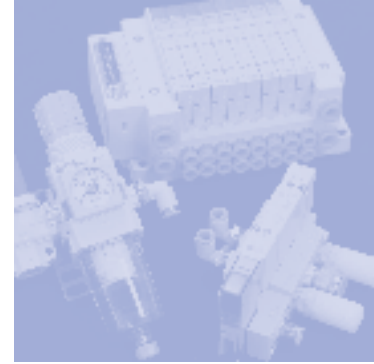
Basic Protection

Medium Protection

Maximum Protection

				
Model	Steel-It paint with stainless steel output configuration	Nickel plated with stainless steel output configuration	Complete stainless steel	Complete stainless steel
Series	SP+, TP+, SK/SPK+, HG+, TK/TPK+, LP Gen3, Vdrive	LP Gen3, SK/SPK+, HG+, TK/TPK+	LP Gens	Hygienic Design HDV & HDP
Housing	Nickel plated with Steel-It coating	Nickel plated	316L stainless steel	Electropolished 316L stainless steel
Seals	VITON	VITON	VITON	PTFE
Output	High grade stainless steel	High grade stainless steel	High grade stainless steel	High grade stainless steel
Lubrication	NSF-approved	NSF-approved	NSF-approved	NSF-approved

Pneumatic Devices



Werner Electric Supply has teamed with SMC USA to complete our automation product offering, and to supply the highest quality pneumatics products available. From valves to solenoids to actuators, our line is complete. Together with over 60 years of experience with industrial automation systems, our partnership with SMC solidifies our expertise and ability to support your needs.



Supporting Your Needs with Service and Expertise

Werner Electric Supply not only provides the pneumatics equipment you need, but also the service and expertise that it takes to provide a complete solution. Our pneumatics staff is ready to support our full range of customers, from OEMs to maintenance departments!

Look to Werner Electric Supply for new application and engineering assistance including sizing, AutoCAD drawings and new product training. Our pneumatics experts can recommend components that provide faster and more accurate operation for existing equipment.

Werner Electric assists in addressing problem areas such as premature component failures, slow performance, or conversion to serial communication. We can also cross-reference competitors' parts and recommend energy-saving solutions. Werner offers a large inventory of SMC components and will add customer specific products as needed.

**Give one of our pneumatics experts a call.
They will be happy to assist you!**

- Product Training
- Expert Consultation
- Custom Assembly
- Engineering Assistance
- Customer Specific Inventory Available



The Global Leader in the Design and
Manufacture of Pneumatic & Electro-Pneumatic
Components for Automation.



Darren McIvor
Product Manager – Pneumatics & Power Transmission

Darren began his career with Werner Electric Supply in May of 1998 as an Account Manager.

Darren now serves as the Product Manager for Pneumatics and Power Transmissions. He has over 25 years of experience from the electrical and mechanical industries. Darren holds a

Bachelor of Science degree in Industrial Technology from UW-Stout.

Darren's responsibility at Werner Electric is managing the sales and support for the Pneumatics and Power Transmission product group. His most enjoyable experience is helping customers with their project applications.

Outside of work, he keeps busy with his wife, Nicki, and their two boys. The boys are very active in sports with Darren helping coach their baseball and basketball teams. Darren also enjoys boating, fishing, hunting, golfing, and taking care of the family fruit orchard in his free time.

Phone: 920-815-4223

E-mail: dmcivor@wernerelectric.com

Contact us for Application & Technical Support

920-815-4156

Kevin Dorn

Product Specialist - Power Transmission
 920-815-4275 • kdorn@wernerelectric.com

Nate Wold

Product Specialist - Pneumatics
 920-815-4156 • nwold@wernerelectric.com

Joey Larson

Product Specialist - Pneumatics & Power Transmission
 920-815-4137 • jl Larson@wernerelectric.com



Modular Style Filter, Regulator, Lubricator Units, Epoxy Coated

This cost effective and clean looking series allows you to pick a combination of modular style air preparation equipment that best suits your needs.

Filter – regulator – lubricator combinations have an external epoxy coating of metal surfaces for use in aggressive or wash-down environments.

Features:

- Available sizes: 1/8, 3/8, 1/2
- Epoxy resin coating and stainless hardware for enhanced protection in corrosive manufacturing environments
- Port sizes: 1/4, 3/8, 1/2
- NPT threads



Electro-Pneumatic Pressure Regulators

Stepless control of air pressure proportional to an electrical signal.
 *Ethernet/IP available as an option.

Features:

- Sensitivity: 0.2 kPa (100kPa specification)
- Linearity: within $\pm 1\%$ (F.S.)
- Hysteresis: within $\pm 0.5\%$ (F.S.)
- Flows from .24 CFM (7 L/min) to 140 CFM (4000 L/min)
- Built-in pressure transducer with output signal
- Standalone unit or manifold type, up to 8 per manifold



Pneumatic Devices (continued)

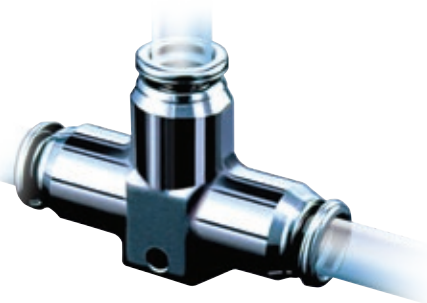
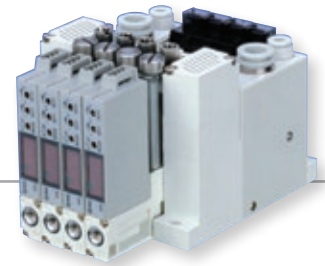


Vacuum Products

- Suction cups
- Switches
- Hi-Vac valves
- Adapters
- Filters
- Buffers
- Regulators

Features:

- Single to 3-stage diffuser options
- Standalone or manifold style ejectors with blow off option
- Multiple pad material options
 - NBR
 - Silicone rubber
 - Fluoro rubber
 - Conductive/nonconductive



Stainless Steel 316 One-Touch Fittings

Certified to meet current Food Sanitation Law standards.
All stainless steel except seal parts.

Features:

- Metal parts are stainless steel 316
- Seal parts are Special FKM
- Grease-free
- Fluid temperature -5° to 150°
- Can be used with steam
- Applicable tubing material: FEP, PFA, Soft Nylon, Polyurethane, Polyolefin



Stainless Steel Fittings 304 and 316

Features:

- Schedule 40 and 80 stainless steel nipples
- 150#, 304 and 316 stainless steel fittings
- High pressure stainless steel 1000# fittings & bar stock
- High pressure stainless steel 3000# fittings & bar stock (elbows, tees, hex nipples, couplings, locknuts, hose barbs, ball valves, hose clamps, etc.)

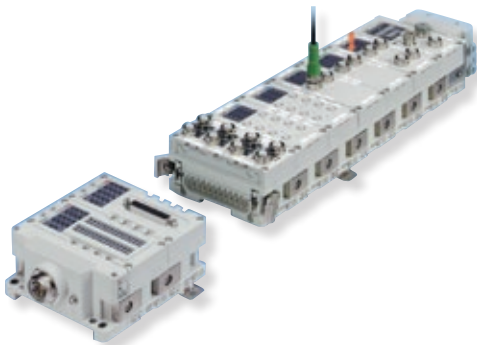




Series SY3000/5000/7000

Features:

- 5-Port solenoid valves
- Single unit/sub-plate type
- M12 connector
- IP67 compliant



Fieldbus System Series EX260

Output device for driving 5 port solenoid valves.

Features:

- Available in Ethernet, DeviceNet, EtherCAT, Profibus & Profinet
- IP67 Rated
- Drives up to 32 valves
- Compact size only 28mm

Series EX600

Input/Output, Analog or Digital

Features:

- Self diagnostic function
- Max. 9 Units can be connected in any order



Stainless Steel Cylinders for Wash Down Applications (CJ5-S/CG5-S)

For use in environments with water spray such as food processing machines.

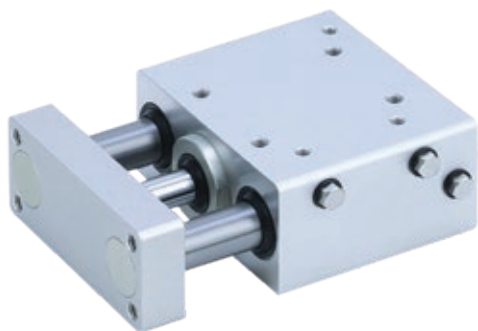
- All stainless steel specification (external parts)
- Stainless steel (SUS304) is used for external metal parts
- Corrosion resistance is improved even in environments with exposure to water
- Exterior configuration reduces residual liquid

Features:

- Electropolishing of mounting bracket surfaces makes them smoother to prevent build-up of liquids and foreign matter
- Plugs are provided for unused mounting threads (Series CG5-S) to prevent residue build-up
- Two types of seal material NBR (Nitrile rubber) or FKM (Fluoro rubber) can be selected to accommodate the application
- Uses grease for food processing machines which meet FDA standards
- The use of non-toxic additives allows confident use in equipment for foods, beverages and medical products
- Special scraper (standard) prevents water from entering the cylinder
- Can be disassembled (Series CG5-S)
- Replacement of seals promotes an extended service life



Pneumatic Devices (continued)



HY(D)G, Hygienic Design Cylinder, Guide Type

SMC's hygienic design guide cylinder, series HYG, offers significantly improved water resistance by adopting a new lubrication construction. The cylinder's flat configuration (grooves for auto switches and holes for cushion needles, etc. have been eliminated) allow the surface to be wiped off easily.



HY(D)Q, Hygienic Design Cylinder, Basic Type

SMC has developed production and packaging applications involving food and beverages which need specialized equipment to meet strict hygiene standards required in these industry sectors. All the models in the HY series are particularly suitable for application in the "non-food" or "splash" zones of a production line. Their high quality construction and optional food grease ensure an increased service life. The HYQ is the series basic type and is available with a rail mounted auto switch, which is fully adjustable along the stroke length, providing improved cleaning benefits.

Features:

- Hygienic design cylinder
- Bore sizes (mm): 20, 25, 32, 40, 50, 63
- Strokes up to 100mm depending on bore size
- New switch style allows cylinder surface to be wiped off easily
- New lubricating construction significantly improves water resistance
- Male or female rod end



HY(D)B, Hygienic Design Cylinder, Round Type

SMC's hygienic design cylinders, series HY, offers significantly improved water resistance by adopting a new lubricating construction. The cylinder's flat configuration (grooves for auto switches and holes for cushion needles have been eliminated) allows the surface to be wiped off easily.

Features:

- Five fold increase in service life over the conventional water resistant cylinder
- The mounting dimensions are identical to those of the CG1 series
- Maximum operating pressure: 1.0MPa
- Ambient and fluid temperature: with auto switch: 0°C to 60°C, without auto switch: 0°C to 70°C
- Sealant material: NBR and external FKM



Mechanical Solutions



Brother Gearmotors

Features:

- High-grade grease standard for lifetime lubrication
- Superior resistance to water ingress/harsh chemicals in food processing plants
- Compact in size
- Sealed for life with superior sealing capabilities
- E-Coat process assures tough and chemically-resistant coating
- Multiple standard options and mounting configurations

brother

Stainless Steel Motors

Connex Electric Motors Gator series is a stainless steel, TEFC three phase motor. With drill and trapped drains and double lip contact seals, these high efficiency motors are a safe bet for food industry wash down duty applications.

Features:

- 316 stainless steel
- Premium efficiency, high efficiency
- Food industry wash down applications
- Three phase, 50/60Hz, 208-230/460v
- TEFC, TENV class F insulation
- 40° C ambient continuous duty
- NEMA MG1 part 31 (Inverter rated)
- UL recognized, CSA certified
- IP56 protections



Motorized Pulleys for Unit Handling and Food Processing

Rulmecca motorized pulleys are compact, lightweight, have improved safety, high reliability, low maintenance requirements, and reduced energy consumption. Major equipment manufacturers and conveyor operators choose Rulmecca for their processing plant, scanning systems, and warehousing applications.

Features:

- Available in diameters of 4.45", 5.45", and 6.49"
- Eleven models including tiny 3.15" diameter 0.16 HP unit to the huge 40.16" diameter 330 HP
- Virtually unlimited power if combined with "multiple drive configuration"
- Multiple belt speeds and widths
- VFD compatible
- Single phase or three phase power supply compatibility
- 115v, 230v, 380v, 460v and 575v power supply compatibility

Werner Electric Supply also
proudly features products from:



GROVE GEAR



Sanitary Enclosures



Werner Electric is a proud supplier of Hoffman enclosure products. Hoffman can provide the perfect enclosure solutions to meet your specific needs. Plus our sophisticated delivery system provides you with fast and convenient service.



Tony Monday
Enclosure Product Manager

With over 15 years of experience in the electrical industry, Tony provides exceptional support for your enclosure applications. With his background as an electrical engineer, manufacturer's representative, and now as our enclosure product manager, Tony understands every

aspect of a project. He has a variety of responsibilities as Werner Electric's Enclosure Product Manager:

- Technical support
- Quotations
- Modification services
- Coordination of assemblies
- Product selection

Tony enjoys challenges, so contact him for any questions you might have about your enclosure applications.

Phone: 920-815-4185

E-mail: tmonday@wernerelectric.com

Hoffman Meridian Distributor

As a Hoffman Meridian Distributor, Werner Electric supports your enclosure needs with technical assistance before and after the sale!

- On-staff enclosure specialist
- Extensive inventory
- High level of training for service staff
- Direct contact with factory product managers
- Product selection assistance
- Access to Hoffman's Modification, Custom Enclosure, and Co-developed Services
- Stock orders placed and delivered from Hoffman every day



Sanitary Junction Box

No Continuous Hinge or Screw Down Clamps!

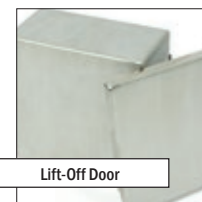
- Lift off hinges
- 14-gauge 304 stainless steel
- Quarter turn latch
- Mounting studs for back panel
- Foam in place of gasketing
- NEMA 4X rated
- Sloped-top door flange

Part Number	Dimensions
SJB664SS	7.25"h x 7.25"w x 4"d
SJB885SS	8"h x 8"w x 5"d
SJB10106SS	10"h x 10"w x 6"d
SJB12126SS	12"h x 12"w x 6"d

All sizes in stock at Werner Electric



Sanitary Hinge Inside



Lift-Off Door



Sanitary Pitched Flange



Sanitary Hinge Outside

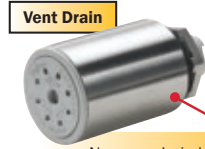


H2OMIT Thermoelectric Dehumidifier

Hoffman's H2OMIT Thermoelectric Dehumidifier removes moisture from the air within an enclosure, providing an inexpensive yet highly effective way to protect components from condensation.

Features:

- Operates on 24-Volt DC power
- 4.5 amps max (84 watts)
- Removes 8 oz. of moisture in 24 hrs
- Compact 6.00-in. x 5.50-in. x 5.75-in. design
- Mounts via DIN rail on internal panel or directly onto the inside bottom of enclosure
- Rotating side air vents direct re-circulating air away from critical controls



Vent Drain

No more drain holes that allow water inside your electrical cabinet.



Ask your Werner Electric enclosure expert about free vent drain samples.



Other Watershed models also available!

Watershed® Enclosures

The Hoffman Watershed® stainless steel free-stand enclosure, with its unique design and Type 4X rating, is perfect for mounting electrical or high-tech electronic equipment in a variety of settings, particularly sanitary wash down production environments like food, beverage, or pharmaceutical processing. These same features also are useful in petrochemical plants, pulp and paper facilities and waste-water treatment plants.

Features:

- 12 gauge Type 304 stainless steel
- Seams continuously welded and ground smooth
- Smooth Type 304 stainless steel lift-off bullet-style hinges



HY-SHED Stainless Steel Enclosures

These stainless steel enclosures are designed specifically to address the needs of high pressure and high temperature wash down applications in the food and beverage industry.

Features:

- Removable silicone gasket conforms to FDA regulations
- IP69K protection rating for high pressure/high temperature washdown, TYPE 4X
- Sanitary design principles, ease of cleaning



SYSPEND® Sanitary HMI System

The SYSPEND® Sanitary HMI (Human-Machine Interface) System is a Type 304 stainless steel enclosure series and suspension system designed to enclose, protect and suspend lightweight HMI devices up to a maximum load of 90 lb. (40.8 kg) in NEMA Type 4X environments.

The system features a modular design for application versatility and is specifically designed to meet the demanding needs of sanitary environments. The entire system meets Type 4X and IP69K requirements for high-pressure, high-temperature wash down applications.

Features:

- Type 304 stainless steel construction provides corrosion resistance and ease of cleaning
- SYSPEND-LOK™ attachment method prevents tubes from turning and pulling out of fittings and provides a water-tight connection
- Straight, L- and U-shaped tubes available in various lengths to provide design flexibility
- Swivel and fixed couplings provide rigid connection point between tubes or between tube and enclosure
- Swivel and fixed base brackets provide secure attachment to wall, floor or machine with easy leveling capability
- Swivel fittings provide 330° rotation
- Optional base bracket cover can be used on wall, floor or machine to cover exposed hardware on fixed base bracket



Safety Products



Ben LeRoy, QSSP
*Product Manager –
 Safety Products & Tools*

Ben started at Werner Electric in November of 2006. He has a bachelors degree in General Business and a minor in Supply Chain Management. In fall of

2013, he received his QSSP through the International Safety Equipment Association.

He started his tenure in purchasing where for 5 years he was a buyer for many of our product groups including safety products. Following Ben's time in purchasing he started his transition to Product Manager where he took on the Safety Products initiative. His responsibilities at Werner Electric are managing sales and support of the Safety Product Group including personal protective equipment, safety training and customer safety audits.

Ben's most enjoyable experiences come from day-to-day interaction with helping customers identify PPE needs and building an effective safety program. Ben is happily married to his wife Emily and a proud parent of three children.

Phone: 920-815-4245

E-mail: bleroy@wernerelectric.com

Werner Safety Solutions

Werner Electric Supply has the products & expertise to support your safety initiative!

Our team of safety experts can perform a safety audit at your facility to identify areas of concern. From safety gloves to overcurrent protection, our experts can supply you with all of the information and products you need to make your work environment safer. It's part of our plan to help your bottom line. We can help you prevent expenses incurred due to a workplace incident.

- Hand Protection and Glove Analysis
- Fall Protection
- Lock out/Tag out
- Hearing Conservation Training
- Signs & Identification Systems
- Hand & Arm Assessment Analysis
- Respiratory Protection
- Confined Space Analysis
- Arc Flash Hazards
- Job Safety Analysis
- Technical Assistance for all PPE Products
- Hazardous/Flammable Liquid
- Vendor Managed Inventory

Safety Product Lines

Arc Flash Equipment

Bulwark
 Chicago Protective
 PIP
 Salisbury

Ergonomic Supports & Matting

Andersen Matting
 Crown Matting
 Ergodyne
 OccuNomix
 PIP

Eye Protection

3M
 Gateway
 PIP
 Pyramex
 Uvex

Fall Protection

3M/DBI-SALA/
 Protecta

First Aid

First Aid Only/Pac-Kit
 North

Hand Protection

Global Glove
 PIP
 Sempermed
 Showa Best
 West Chester

Head & Face Protection

3M
 Jackson
 MSA
 Pyramex

Hearing Protection

3M
 Gateway
 Howard Leight
 Pyramex

Hi Visibility

Ergodyne
 Global Glove
 OccuNomix

Lock Out/Tag Out

All American Lock
 Brady
 Master Lock
 Panduit

Protective Clothing

3M
 DuPont (Tyvek)
 Keystone
 West Chester

Respiratory Protection

3M
 Gateway
 North
 PIP

Safety Cabinets & Spill Containment

Durham
 Eagle
 Justrite
 Lyon Workspace Products

Sorbents

3M
 Brady



Disposable PPE

Werner Electric supplies premium brand disposable PPE products known for exceptional quality, consistency and innovation.

- Gloves
- Aprons
- Coveralls
- Shoe Covers
- Lab Coats
- Hairnets
- Sleeves
- Beardnets



3M Metal Detectable Hearing Protection

3M has developed hearing protection for food processing and other industries where it is critical to keep earplugs from contaminating products and processes. Recognized by most metal-sensing systems, these earplugs feature an implanted stainless steel ball bearing in the plug and metal particles in the cord.



Pyramex Ridgeline™ Bump Caps

Stylish RIDGELINE bump caps are available for applications where hard hats are not required, but some protection from minor bumps and scalp lacerations are needed. They are made of polyethylene material and are not designed to meet the safety standards for industrial head protection. Available in 7 colors!



Vendor Managed Inventory Services

VMI Assisted

You maintain control. We assist.

Werner Electric Supply understands that some of our customers need to maintain control of what gets replenished and ordered. We offer this program to make the ordering process as streamlined and accurate as possible.



Benefits of this program:

- You maintain control of which products are ordered and how often.
- Werner Electric assists with organizing and labeling your products.
- All orders are placed easily and electronically.
- Reduce the amount of time your staff takes in the ordering process.
- Place orders as often as you need.
- Orders delivered next day in most cases.
- Usage reports available at the touch of a button.

VMI Pro

We take care of it all.

- We organize your inventory.
- We order your inventory.
- We deliver and put away your inventory.
- We monitor your inventory.
- We generate usage reports.
- We make suggestions based on your usage history.



Benefits of this program:

- Improve Inventory Accuracy
- Reduce Downtime
- Reduce Stock-outs
- Increase Productivity
- Reduce P.O. Cost
- Reduce Inventory

Full Line of Fasteners



Hex Cap Screws

- Grade 2, 5, 8, L9, 8.8, 10.9
- 304, 316, A2, A4, Silicone Bronze, Aluminum, Exotic Stainless Steel
- Plain, Zinc, Yellow Zinc, Galvanized
- ASTM, ASME
- Imperial and Metrics



Socket Products

- Socket, Flat, Button, Low Head, Shoulder Screw, Pipe Plug, Set Screw (Multiple Tips)
- Black Oxide, Zinc Plated, Yellow Zinc, Stainless Steel, Silicone Bronze
- Nylon Patch / Nylon Pellet, Tamper Resistant
- Imperial and Metrics



Nuts

- Finish, Heavy, Structural, Flange, Jam Coupling, Locking, Acorn, Wing, Square Slotted, Wheel, Speed
- Grade 2, 5, 8, Class C, Class 8, Class 10, DH, 2H
- 18-8, 316, Aluminum, Brass, Nickel, Copper, Exotic Stainless Steel
- ASTM, ASME
- Zinc, Plain, Galvanized



Pins

- Dowel, Spring, Cotter, Clevis
- Hardened, 18-8, 316, 416, 420, DIN, A2, A4
- Plain, Zinc



Washers

- Flat, Lock, Structural, Fender
- Low Carbon (Gr. 2), Case Hardened (Gr. 5), Through Hardened (Gr.8)
- 304, 316, A2, A4, Silicone Bronze, Aluminum, Exotic Stainless Steel
- Plain, Zinc, Yellow Zinc, Galvanized



Threaded Rod/Studs

- Low Carbon (Grade 2 / Class 4.6), B7, B8, B8M, B16, Grade 8, Class 8.8
- Steel, Stainless (18-8, 316, A2, A4)
- ASTM, ASME, AISI, DIN
- Plain, Zinc, Galvanized
- 3', 6', 12', Custom Cut-to-Length



Concrete Anchors

- Powers, Redhead, Simpson Strong-Tie
- Mechanical, Bent Anchor Bolts
- Epoxy/Acrylic Anchoring Adhesives
- Shear Connectors, Headed Concrete Anchors



Strut & Accessories

- Green, Galvanized, Steel, Stainless - 304/316, Aluminum, Plain, HDG, PVC Coated
- 13/32" through 6 1/2" (Stocking 13/16" & 1 5/8")
- 10' and 20'
- Strut Nuts, Washers, Brackets, Clamps



ASTM/ASME

- ASTM, ASME, AISI, DIN, EN Specs
- Studs, Bolts, Sockets, Nuts, Washers
- Domestic/Import Materials
- Custom Coatings



Weld Fasteners

- Stud - CD, Arc, Collar
- Low Carbon Steel, Stainless Steel, Aluminum Alloy



Screws

- Machine Screws, Self-Drilling, Self-Piercing, Sheet Metal Screws
- Low Carbon 304, 316, A2, A4, Silicone Bronze, Brass



Rivets

- Steel, Aluminum, Stainless
- Blind, Multi-Grip, Structural

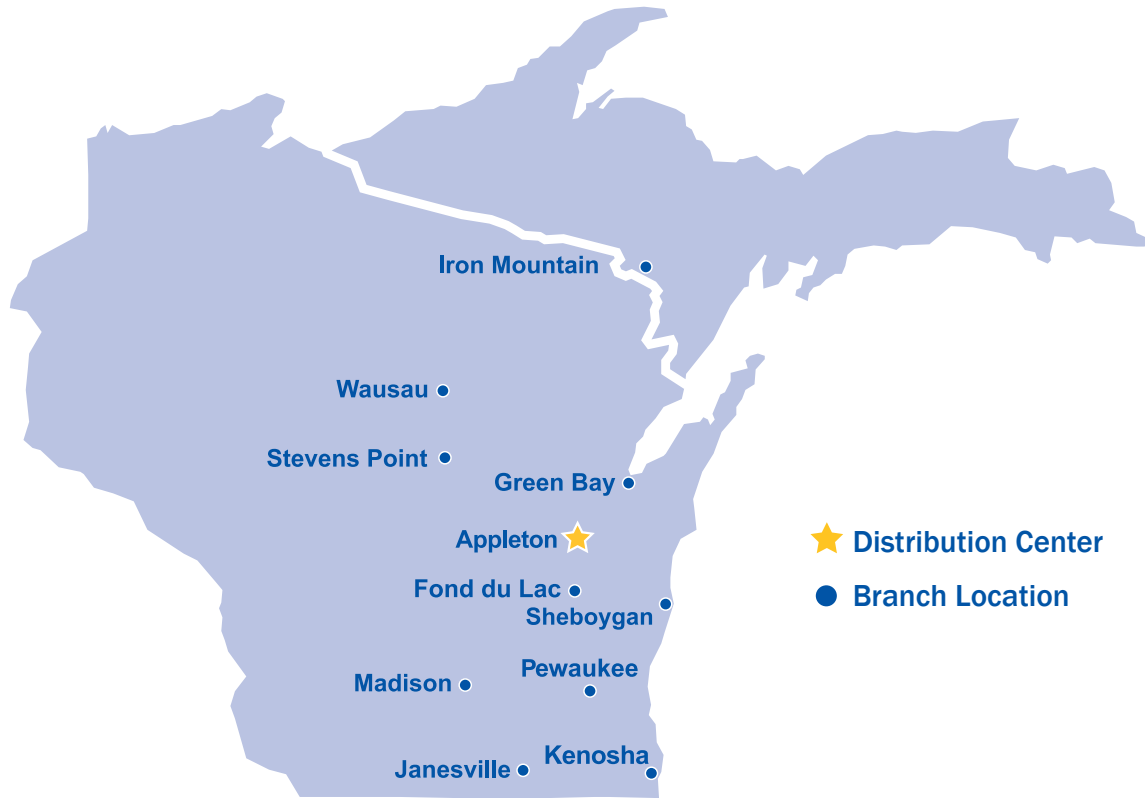


Custom Fasteners

- Production - Print Based No Minimum Quantity
- Cut-to-Length
- Plated - Electro-Zinc, Mech Zinc, Cadmium, Anodizes Oxide, Phosphate, Hot-Dipped Galvanized, Nickel Passivated Stainless, Chromate Colored / Dyed
- Painted



Locations



- ★ Distribution Center
- Branch Location

Northwest, Northeast, and Southwest WI Region Branches

Appleton

4800 W. Prospect Ave.
Appleton, WI 54914
Phone: 920-815-4050
Fax: 920-815-4060

Green Bay

3055 Holmgren Way
Green Bay, WI 54304
Phone: 920-337-6700
Fax: 920-337-6710

Janesville

1000 N. Parker Dr.
Janesville, WI 53545
Phone: 608-752-9496
Fax: 608-752-5810

Stevens Point

2728 Church St.
Stevens Point, WI 54481
Phone: 715-344-6385
Fax: 715-344-0199

Fond Du Lac

1301 Capital Dr.
Fond du Lac, WI 54937
Phone: 920-924-4500
Fax: 920-924-4510

Iron Mountain

1400 Breitung Ave.
Kingsford, MI 49802
Phone: 906-779-5040
Fax: 906-779-5033

Madison

4428 Pflaum Rd.
Madison, WI 53716
Phone: 608-221-0090
Fax: 608-221-4559

Wausau

7900 Highland Dr.
Wausau, WI 54401
Phone: 715-845-8808
Fax: 715-845-6545

Southeast WI Region Branches

Kenosha

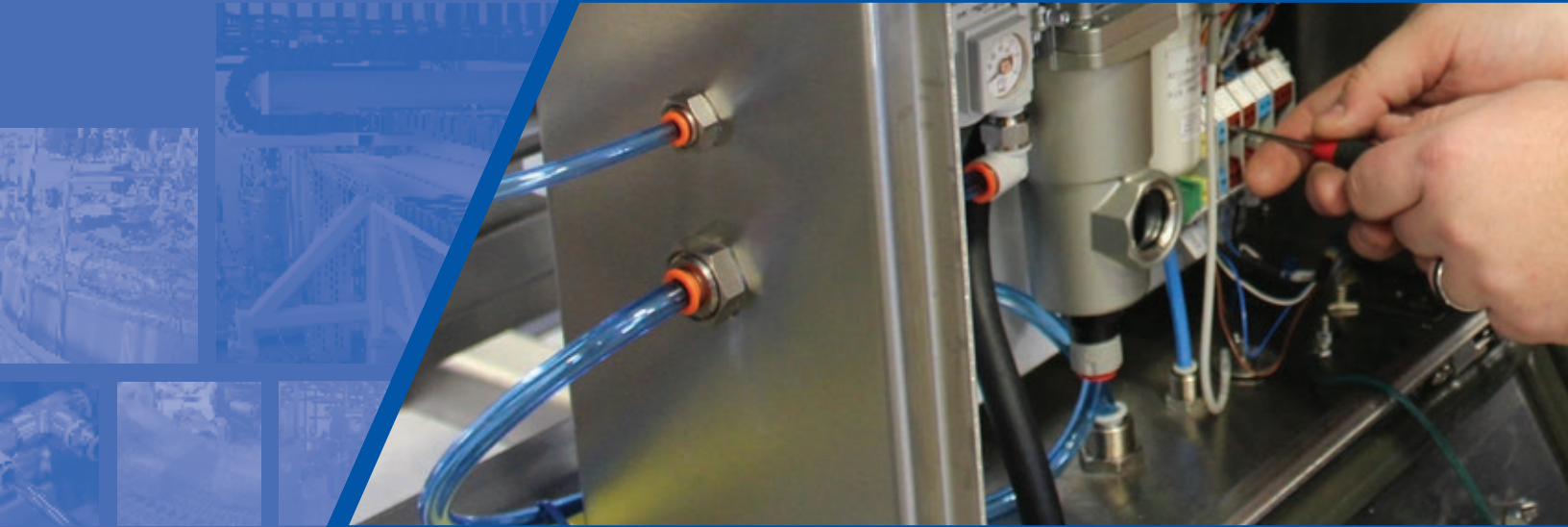
4611 68th Ave.
Kenosha, WI 53144
Phone: 262-997-6225
Fax: 262-997-6226

Pewaukee

W238 N1777 Rockwood Dr.
Pewaukee, WI 53188
Phone: 262-436-5676
Fax: 262-436-0667

Sheboygan

4630 S. Taylor Dr.
Sheyboygan, WI 53081
Phone: 920-694-3300
Fax: 920-694-3301



FOOD & BEVERAGE

Automation/Sanitary Solutions

WERNER
ELECTRIC SUPPLY

866-4-WERNER • WERNERELECTRIC.COM